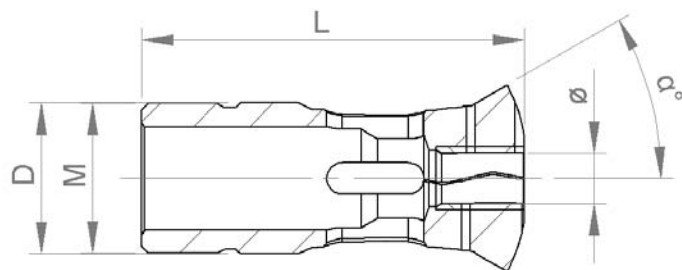


CANON «RAPTOR»



Genre	Ø corps D	Longueur L	Filet M	Angle cône α°	Ø max alésage	N° article
ST-605	24	61	M24x1	30°	16	ST02152
ST-853	18	59	M16x1	30°	13	ST02165
ST-1351	9	44	M8x0.75	16°	5	ST02166
ST-1352	11	53	M10x0.8	16°	7.5	ST02167
ST-1353	16	59	M14x1	16°	10.5	ST02163
ST-1354	22	68	M19x1	16°	16	ST02168
ST-1357	28	81	M25x1	30°	21	ST02169
ST-1604	16	59	M14x1	16°	10.5	ST02170
ST-221T	21	57.5	M18x1	12°	11	ST02171
ST-39001T	22	68	M22x1	16°	18	ST02172
ST-223T	28	82	M25x1	16°	21	ST02173
ST-227T	34	87.5	M34x1	10°	25	ST02174
ST-229T	42	82	M40x1	16°	32	ST02175