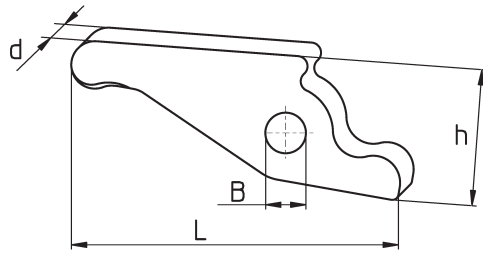
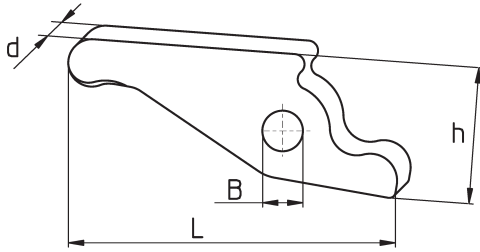


# Spannfinger *Toggles / Chuck Levers*

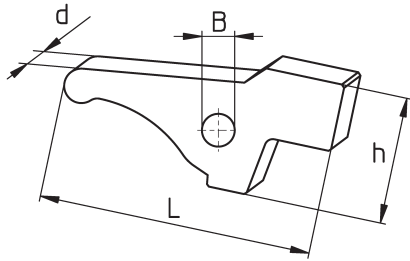




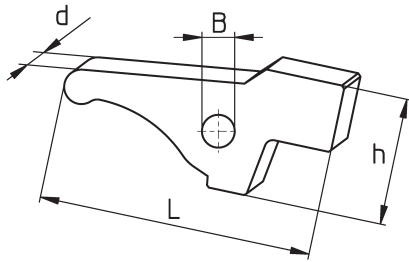
	Bestell-Nr. order-no.	Maschine machine	Spindel spindle	Orig. Ersatzteil-Nr. orig. spare part no.	d	L	h	B	Pin
<b>BECHLER</b>									
	SF10.0803	BR 20.BR 12		441 335	12,0	77,0	28,6	6,0	
<b>CITIZEN</b>									
	SFA20-Sonder	A20			8,0	51,0	18,5	6,0	
	SFC16L1	L16 E / L20	B	L216 C 114	6,0	55,0		4,0	4
	SFC16L6	L16 E / L20	A		10,0	73,0		8,0	3
	SF10.1005	B12 / BS20 / K16 / C16 / L20	A	F 412 SC117	8,0	55,0	21,3	6,0	2
	SF10.1005	C16 / L20	B		8,0	55,0	21,3	6,0	2
	SF10.1006	B12	B	B 12 U 50 C 416	4,0	36,0		4,0	1
	SF10.1007	M 20 / M 32 / A20 / C32 / L25			10,0	72,0	24,0	8,0	3
	V084.162	G16			6,0	52,0	17,5	4,0	
	SF10.1008	L16/N / L16/6 / L10 / L20 / A20		L 216 U 41 B 122	6,0	52,2		4,0	4
	SF10.1012	BS20 / K16	B	B 20 U 50 C 111	8,0	25,5		6,0	
	SF10.1014	B12	B	B 312 U 53 413	6,0	44,0		4,0	5
<b>Stifte passend für CITIZEN <i>suitable pins</i></b>									
	<b>Stift pin</b>	<b>Bestell-Nr. order-no.</b>	<b>Ø x l</b>						
	1	SF10.1010	4 m6 x 22						
	2	SF10.1009	6 m6 x 40						
	3	SF10.1004	8 m6 x 45						
	4	SF10.1003	4 m5 x 30						
	5	SF10.1015	4 h6 x 30						
	SF10.1016	A32new / A20			10,0	91,0		8,0	
<b>FEINLER</b>									
	SFA10	FA 10 / FA 15 / S8			6,9	49,5	19,0	6,0	
	SF10.0204			Stift - <i>bolt</i> 6 h6x3x					
<b>GAUTHIER</b>									
	SF10.1201	GM127 - 4mm		05.03.011	5,9	56,6	15,5	4,0	
	SF10.1203			Stift 4x24					
	SF10.1202	GM127 - 5mm		05.03.012	5,9	56,6		5,0	
	SF10.1204			Stift - <i>bolt</i> 5x24					



	Bestell-Nr. order-no.	Maschine machine	Spindel spindle	Orig. Ersatzteil-Nr. orig. spare part no.	d	L	h	B
<b>GILDEMEISTER</b>								
	SF10.0612	AS67		355-10-2130/001	37,7	86,2		
	SF10.0613	AS67		355-10-2130/002	37,8	87,5		
	SF10.0624	GLD20 / GLD25 / GLD32 / Sprint 32		54.10.119	10	58,0	25,0	7,0
	SF10.0625	GM16 AC		53.01.334-1189	8,0	61,0		8,0
	SF10.0626	GS20 / GM20		31.01.108	11,5	67,8		
	SF10.0629	GLD12 / GLD16 / GD16 / GD20	B	55.10.107	10	53,5	28,6	7,0
	SF10.0631	GM35 / GM 32		35.01.130	19,5	102,6	34,5	
	SF10.0633	MSL60/7 / Sprint32 linear / Sprint42	B	56.10.322-03	10,0	55,0		7,0
	SF10.0636	Speed20 / Speed20-8	A	21.10.141				
	SF10.0636	Speed20	B					
	SF10.0637	Speed12 / Sprint 20 / Speed20-8	B	20.10.136	10,0	56,4		7,0
	SF10.0638	Sprint42	A	26.10.123	13,0	99,4	32,0	10,0
	SF10.0640	GM35/8 / GMC35		42.01.293	15,5	95,5	29,8	
	SF10.0641	GMC20 S		51.01.284	11,8	65,5	22,1	
	SF10.0645	GD32		56.10.129				
	SF10.0651	Sprint32 / 42		26.10.196				
	SF10.0655	Sprint32 / 42		26.10.147				
<b>HANWHA</b>								
	SF10.3385	Hanex17 / XD 20 SL16 / SL20S / ML20	A	BSS 3000-021 3170-M210-1060				
	SF10.3380	Hanex 25 / ML20 / ML26 XD20 / XD32 HPD SL26S/H / SL32S/ SL20 / 26 / 32 / 35HP2		SSS 7000-012 3192-M011-1080				
	SF10.3387	Hanex 25 / ML26 SL26S/H / SL32S/ SL20 / 26 / 32 / 35HP2 32HPD (A-Sp.)		SSS 3000-015 3173-M010-1140				
	SF10.3381	SL12 / XD12	A	3184-M010-1130 NPM 0100 S 113				
	SF10.3392	STL38H		ST 11000-819				
	SF10.3393	XD20V / XD20/26II / XE20/26	A	PD11000-009				
	SF10.3393	XD20V / XD20/26II / XE20/26	B	PC16000-105				
	SF10.3388	XD26H	B	DA 15000-005				
	SF10.3389	XD26H	A	SM 02026-001				
	SF10.3390	XD32H	A+B	CA 11000-013A				
<b>INDEX</b>								
	SFDG	DG / ON / OR		AA1371	11,8	66,1	17,2	
	SFC29	C29		C29591	15,3	74,2	20,0	
	SFB42	B36 / B42 / B52 / B60		A73281	19,9	100,1	24,2	
	SFC16L1							
	SFC16L2							



	Bestell-Nr. order-no.	Maschine machine	Spindel spindle	Orig. Ersatzteil-Nr. orig. spare part no.	d	L	h	B	Pin
<b>SCHÜTTE</b>	SF10.1717	SF26 / 32		C3220-B-23Z	17,5	92,2			
<b>SKODA-MAS</b>	SF10.1801	A12 / A20 B		321 1512 E 4L28	13,5	74,1			
<b>STAR</b>	SF10.2651	ECAS 20	B	540-39-600/620	10,0	67,0		8,0	9
	SF10.2654	ECAS 32T	A	580-320-70	12,0	89,7		8,0	4
	SF10.2655	ECAS 32T A48	B	580-840-70	12,0	77,0		8,0	4
	SF10.2601	JNC16	A	025-32-060/080	10,0	72,5		6,0	3
	SF10.2602	JNC25/32		052-32-070/090	14,0	69,0		8,0	5
	SF10.2609	KJR16	A	250-32-090/100	10,0	68,0		6,0	3
	SF10.2616	KJR16	B	252-32-070/090	8,0	34,4		6,0	2
	SF10.2622	KJR25	A	260-32-070/090	12,0	80,0		8,0	4
	SF10.2622	KJR25	B	262-32-070/090	12,0	80,0		8,0	4
	SF10.2622	KJR25 II	A	360-32-070/090	12,0	80,0		8,0	4
	SF10.2622	KJR25 II	B	362-32-080/100	12,0	80,0		8,0	4
	SF10.2606	KNC16 / 20	B	222-32-230/250	12,0	50,0		8,0	6
	SF10.2615	KNC16 / 20 mit Fase)	A	220-32-070/090	12,0	77,0		8,0	4
	SF10.2602	KNC25 / 32	A	200-32-070/090	14,0	69,0	30,0	8,0	5
	SF10.2608	KNC25 / 32	B	202-32-230/250	12,0	50,0	25,5	8,0	6
	SF10.2602	KNC25 / 32 II	A	340-32-070/090	14,0	69,0		8,0	5
	SF10.2608	KNC25 / 32 II	B	342-32-230/250	12,0	50,0		8,0	6
	SF10.2620	KNC32 II	B	342-32-231/250	12,0	54,0		8,0	6
	SF10.2609	RNC16	A	210-32-060/080	10,0	68,0		6,0	3
	SF10.2610	RNC16	B	270-82-080/100	6,0	32,5		5,0	1
	SF10.2620	RNCSR32	B	342-32-231/250	12,0	54,0		8,0	6
	SF10.2609	SA12 / 16	A	460-32-100/120	10,0	68,0		6,0	3
	SF10.2624	SA12 / 16	B	460-82-080/100	8,0	39,0		6,0	2
	SF10.2658	SB12RE / RN	A+B	0M0-83-070	8,0	39,0		6,0	
	SF10.2658	SB12RG		IL0-32-820	8,0	39,0		6,0	
	SF10.2624	SB16	B	480-82-070	8,0	39,0		6,0	2
	SF10.2609	SB16	A	460-32-100/120	10,0	68,0		6,0	3
	SF10.2609	SE / SH16	A	400-32-100/120	10,0	68,0		6,0	3
	SF10.2619	SH 7		410-32-100/120	8,0	56,0		6,0	8
	SF10.2601	SNC15		196-32-060/080	10,0	72,5		6,0	3
	SF10.2611	SNC25		091-32-060/080	14,0	85,0		8,0	5
	SF10.2624	SR10J	A	460-82-080/100	8,0	39,0		6,0	2
	SF10.2625	SR10J	B	690-83-070/090	5,0	40,0		6,0	10
	SF10.2607/9	SR16	A	310-32-090/100	10,0	68,0		6,0	3
	SF10.2613	SR16	B	312-32-070/090	8,0	39,0		6,0	2
	SF10.2651	SR16R	A/B	540-39-100	10,0	67,0		8,0	9
	SF10.2606	SR20	B	322-32-070/090	12,0	50,0		8,0	6
	SF10.2606	SR20J	B	322-32-070/090	12,0	50,0		8,0	6

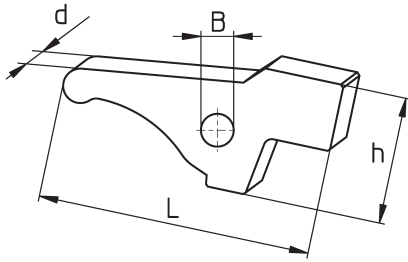


	Bestell-Nr. order-no.	Maschine machine	Spindel spindle	Orig. Ersatzteil-Nr. orig. spare part no.	d	L	h	B	Pin
	SF10.2607/9	SR20J	A	460-32-100/120	10,0	68,0		6,0	3
	SF10.2650	SR20R	B	540-84-050/070	12,0	57,0		8,0	6
	SF10.2651	SR20R	A	540-39-600/620	10,0	67,0		8,0	9
	SF10.2650	SR20R II / III	B	660-84-050	12,0	57,0		8,0	6
	SF10.2651	SR20R II / III	A	660-39-600	10,0	67,0		8,0	9
	SF10.2622	SR20 / 32		330-32-090/100	12,0	80,0		8,0	4
	SF10.2620	SR32	B	332-32-090/110	12,0	54,0		8,0	6
	SF10.2653	SR32J	A+B	670-32-090/110	12,0	67,6		8,0	6
	SF10.2609	SST16		300-32-090/100	10,0	68,0		6,0	3
	SF10.2609	SST16	A	210-32-060/080	10,0	68,0		6,0	3
	SF10.2612	SST16	B	302-32-070/090	8,0	39,0		6,0	2
	SF10.2656	ST38	A+B	0B0-32-130/100					11
	SF10.2651	SV12	A	540-39-600/620	10,0	67,0		8,0	9
	SF10.2652	SV12	B	452-32-100/120	10,0	72,0		8,0	9
	SF10.2652	SV12		823-00-306	10,0	72,0		8,0	9
	SF10.2621	SV20	A+B	420-32-060/080	12,0	78,0		8,0	4
	SF10.2651	SV20R	B	1B0-83-130	10,0	67,0		8,0	9
	SF10.2622	SV32	A	440-32-090	12,0	80,0		8,0	4
	SF10.2622	SV32	A	430-32-090	12,0	80,0		8,0	4
	SF10.2623	SV32J	B	442-32-090/110	12,0	62,0		8,0	6
	SF10.2619	SW7 / R	A	380-32-130/150	8,0	56,0		6,0	8
	SF10.2619	SW7 / R	B	382-32-110/130	8,0	56,0		6,0	8
	SF10.2659	SW12R II	B	1H0-83-120	10,0	67,0		8,0	10
	SF10.2651	SW20	A	540-39-600/620					
	SF10.2616	VNC20	B	749-21-180/190	8,0	34,4		6,0	2
	SF10.2615	VNC20 ohne Fase	A	750-32-060/080	12,0	77,0		8,0	4
	SF10.2602	VNC32		780-32-060/080	14,0	69,0		8,0	5

**Stifte passend für STAR *suitable pins***

Stift pin	Bestell-Nr. order-no.	Ø x l
1	SF11.2601	5 x 28,5
2	SF11.2602	6 x 31
3	SF11.2603	6 x 46
4	SF11.2604	8 x 48
5	SF11.2605	8 x 58
6	SF11.2606	8 x 36
8	SF11.2608	6 x 34
9	SF11.2609	8 x 50
10	SF11.2610	6 h7 x 30,5
11	SF11.2611	12 h7 x 46,5





	Bestell-Nr. order-no.	Maschine machine	Spindel spindle	Orig. Ersatzteil-Nr. orig. spare part no.	d	L	h	B
<b>STROHM</b>								
	SFM105	M75 / 105 / 125 / AS / 155AS		661434	6,9	50,2	21,0	
	SFM125	M125NAR		661435	6,9	50,2	21,0	6,0
	SF10.0204			Stift - <i>bolt</i> 6h6x36: 670439				
<b>TORNOS</b>								
	SFTR14B	AS14 / SAS16	B	2417	4,9	32,4		4,0
	SF10.0507	M7		MD 265	6,8	58,0	18,3	5,0
	SF10.0508	M7 verstärkt - <i>reinforced</i>		MD 9705	6,9	62,6		5,0
	SF10.0516	R10		5 RA 87	11,2	66,0		
	SF10.0517	R10 neu		5 RA 87-06	11,4	69,8		7,0
<b>TRAUB</b>								
	SFA15	A15		9mm 630030	8,8	61,7	17,0	
	SFA25/10	A15 / 20 / 25		10mm 632192	10,0	68,9	18,0	
	SFA25/12	A25 / TC15		12mm 616112	12,0	68,9	18,0	
	SFA26	A26 / 36		14mm 632202	14,0	68,7		
	SFA42	A42 / 60		14mm 630950	14,0	68,7		
	SFTB42	TB30 / 42 / 60 / 80 / TK / TF		18mm 614194	17,9	84,7	22,0	
	SFTD26	TD16 / 26 / 36		12mm 691325	12,0	74,0	18,3	
<b>TSUGAMI</b>								
	SF10.3326	S20 (B-Sp.) / S16		3192-S030-1060	8,0	57,0		
	SF10.3380	BS12 / BO12 (A-Sp.) BS12 / 18 / BO12-18 (B-Sp.) BS20 (A-Sp.) / S16 (A-Sp.) BS20 / 26 / 32 (B-Sp.) HS20 / 26 / 32 (B-Sp.) BN20 (A-Sp.) / HS207 (A-Sp.)		3192-M011-1080	12,0	57,0		
	SF10.3328	HS20 (A-Sp.) / HS207 (A / B-Sp.) BO205E (A / B-Sp.)		3262-M010-1301				
	SF10.3381	BO12 (A-Sp.)		3184-M010-1130	8,0	57,0		