

Führungsbüchsen Anzugsmuttern

Guide Bush Nuts

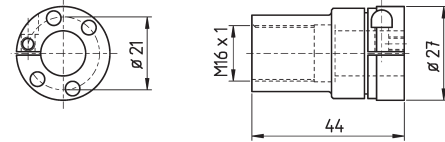


passion for clamping

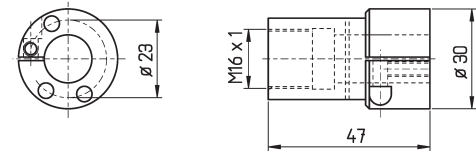
Führungsbüchsen-Anzugsmuttern CITIZEN

Guide Bush Nuts CITIZEN

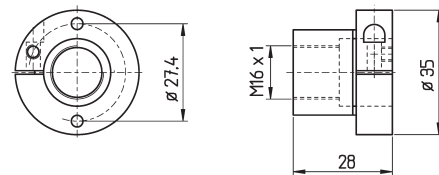
CITIZEN B12	
Bestell-Nr. order-no.	
FVM.B12	



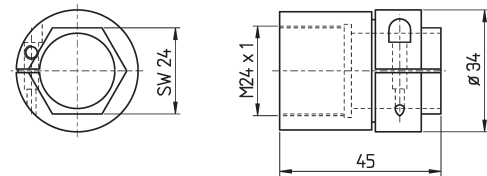
CITIZEN M16	
Bestell-Nr. order-no.	
FVM.M16	



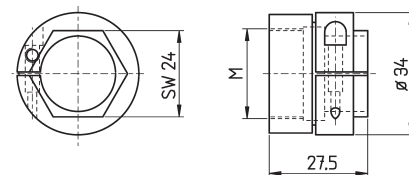
CITIZEN	
Bestell-Nr. order-no.	
FVM.F853	



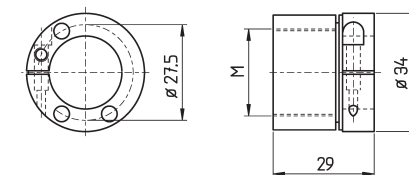
CITIZEN L16	
Bestell-Nr. order-no.	
FVM.L16	



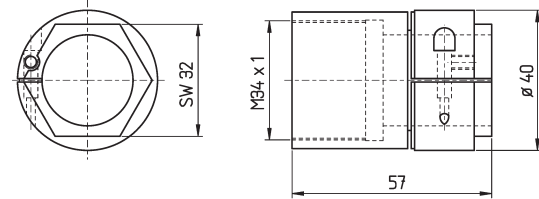
CITIZEN L20 / M20	
Bestell-Nr. order-no.	M
FVM.L20	M25 x 1
FVM.L20-M27	M27 x 1
mit Gew. M27 x 1 für vergrößerten Durchlass bis 23mm <i>enlarged to 23 mm admission, thread M27 x 1</i>	



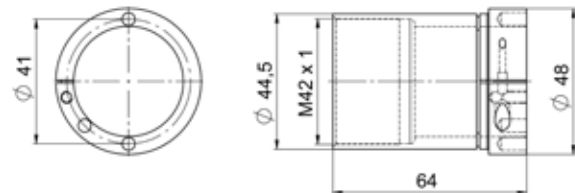
CITIZEN M20	
Bestell-Nr. order-no.	M
FVM.M20	M25 x 1
FVM.M20-M27	M27 x 1
mit Gew. M27 x 1 für vergrößerten Durchlass bis 23mm <i>enlarged to 23 mm admission, thread M27 x 1</i>	



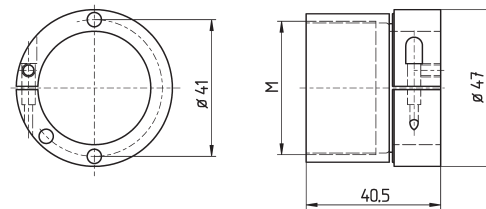
CITIZEN M25 / L25	
Bestell-Nr. order-no.	
FVM.L25	



CITIZEN M332	
Bestell-Nr. order-no.	M
FVM.M332-M42	M42x1



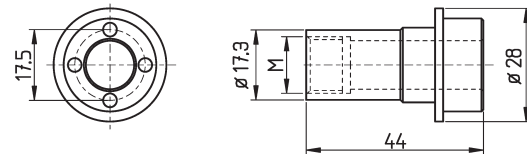
CITIZEN A32	
Bestell-Nr. order-no.	M
FVM.A32	M40 x 1
FVM.A32-M42	M42 x 1
mit Gew. M42 x 1 für vergrößerten Durchlass bis 23mm <i>enlarged to 23 mm admission, thread M27 x 1</i>	



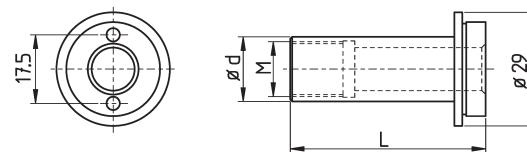
Führungsbüchsen-Anzugsmuttern STAR

Guide Bush Nuts STAR

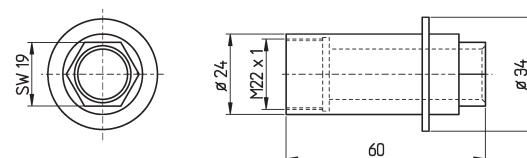
STAR SR10J	
Bestell-Nr. order-no.	M
FVM.SR10J-M14	M14 x 1
FVM.SR10J-M15	M15 x 1



STAR SW7			
Bestell-Nr. order-no.	L	d	M
FVM.38701060	51	15	M10 x 0,75
FVM.38701220	50	16,5	M14 x 1
FVM.38701330	45	16,5	M14 x 1

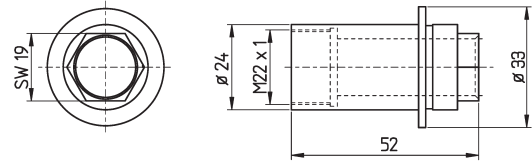


STAR RNC16 - 10017	
Bestell-Nr. order-no.	
FVM.RNC16	

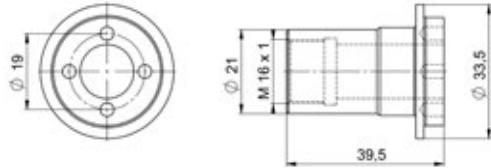


Guide Bush Nuts

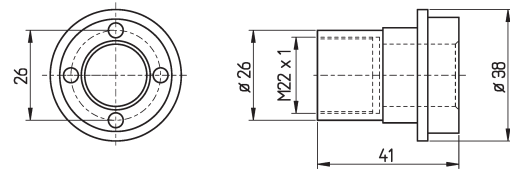
STAR SST16	
Bestell-Nr. order-no.	
FVM.SST16	



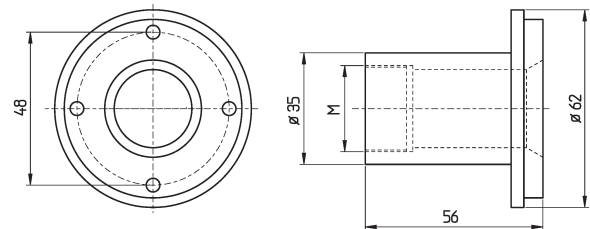
STAR SB12R	
Bestell-Nr. order-no.	M
FVM.SB12R	M16 x 1



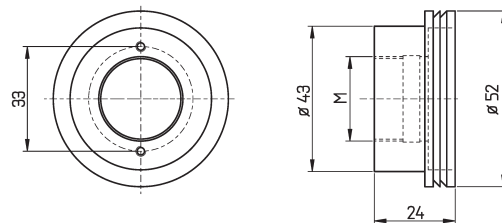
STAR SB16	
Bestell-Nr. order-no.	
FVM.SB16	



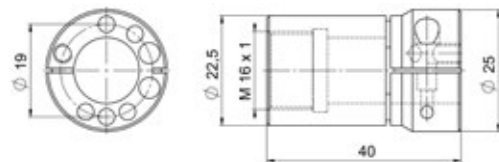
STAR SV20	
Bestell-Nr. order-no.	M
FVM.SV20	M25 x 1
FVM.SV20-M27	M27 x 1
erweitert - <i>enlarged to</i> M27 x 1	



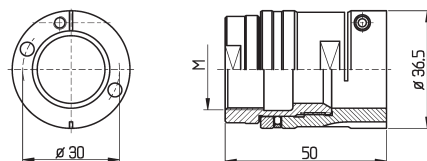
Star SR20J / SR20RIII	
Bestell-Nr. order-no.	M
FVM.SR20J	M25 x 1
FVM.SR20J-M27	M27 x 1
erweitert - <i>enlarged to</i> M27 x 1	



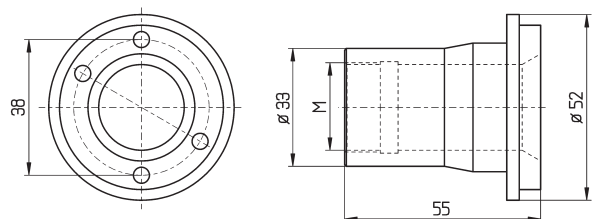
Star SW12RII	
Bestell-Nr. order-no.	M
FVM.SW12RII	M16 x 1



Star SW20 / SR20RIV	
Bestell-Nr. order-no.	M
FVM.SW20	M25 x 1
FVM.SW20-M27 *	M27 x 1
FVM.SW20-2-M25	Type 2 M25 x 1
FVM.SW20-M27-2 *	Type 2 M27 x 1
FVM.SW20-3	Type 3 M25 x 1
FVM.SW20-M27-3 *	Type 3 M27 x 1
Einsatz von Typ 2 nur mit original Umbaukit von STAR möglich - <i>use of type 2 is possible with original kit from STAR only.</i>	
* erweitert - <i>enlarged to</i> M27 x 1	

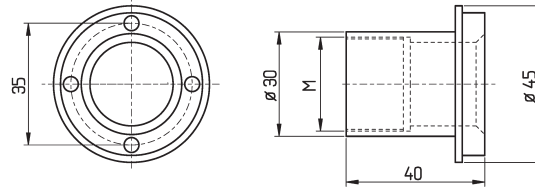


Typ 2:



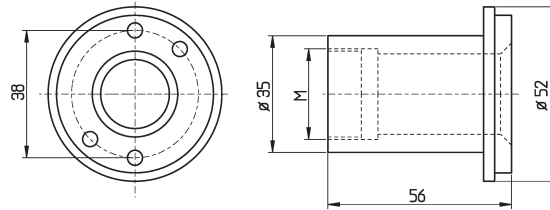
STAR SR20

Bestell-Nr. order-no.	M
FVM.SR20	M25 x 1
FVM.SR20-M27	M27 x 1
erweitert - <i>enlarged to</i> M27 x 1	



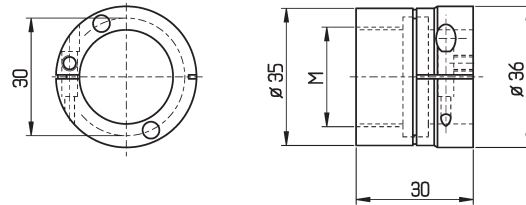
STAR SB20

Bestell-Nr. order-no.	M
FVM.SB20	M25 x 1
FVM.SB20-M27	M27 x 1
erweitert - <i>enlarged to</i> M27 x 1	



STAR SB20RE

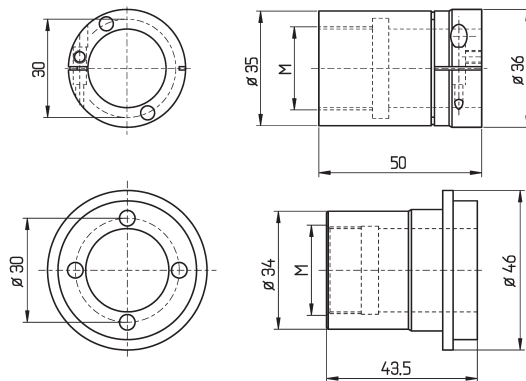
Bestell-Nr. order-no.	M
FVM.SB20RE	M25 x 1
FVM.SB20RE-M27	M27 x 1
erweitert - <i>enlarged to</i> M27 x 1	



STAR SB20RG

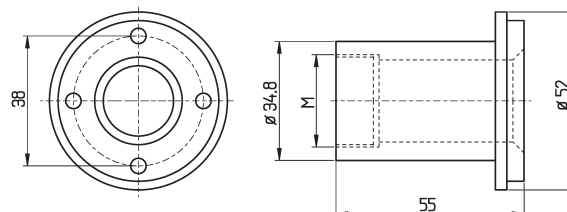
Bestell-Nr. order-no.	M
FVM.SB20RG	M25 x 1
FVM.SB20RG-M27 *	M27 x 1
Ab - from S/N 540:	
FVM.SB20RG-new	M25 x 1
FVM.SB20RG-M27-new *	M27 x 1
* erweitert - <i>enlarged to</i> M27 x 1	

Typ "new":



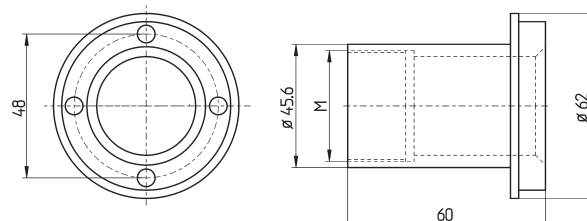
STAR ECAS20 / SR20RI/II / ST20

Bestell-Nr. order-no.	M
FVM.ECAS20	M25 x 1
FVM.ECAS20-M27	M27 x 1
erweitert - <i>enlarged to</i> M27 x 1	



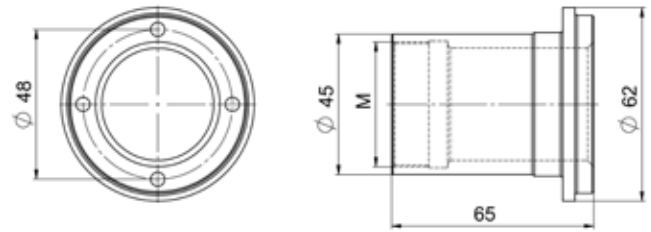
STAR ECAS32 / SV32 / SR32

Bestell-Nr. order-no.	M
FVM.ECAS32	M40 x 1
FVM.ECAS32-M42	M42 x 1
erweitert - <i>enlarged to</i> M42 x 1	



Guide Bush Nuts

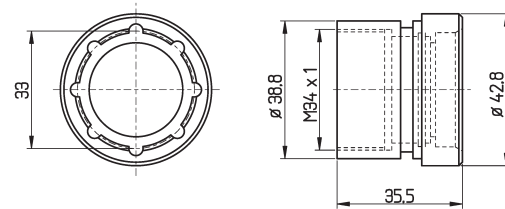
STAR SR32JII	
Bestell-Nr. order-no.	M
FVM.SR32JII	M40 x 1
FVM.SR32JII-M42	M42 x 1



Führungsbüchsen-Anzugsmuttern
GILDEMEISTER

Guide Bush Nuts
GILDEMEISTER

GILDEMEISTER GLD25	
Bestell-Nr. order-no.	
FVM.GLD25	



GILDEMEISTER SPEED20	
Bestell-Nr. order-no.	
FVM.SPEED20	

