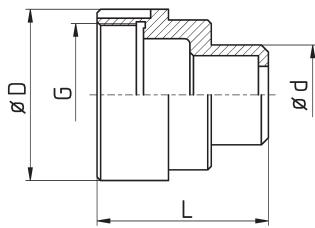


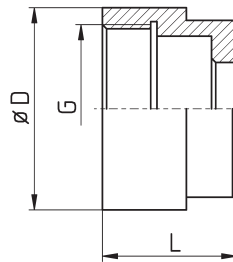
Überwurfmuttern für Druckhülsen

*Cap Nuts for
Collet Sleeves*





MU-CIT-K12/B/F15v15

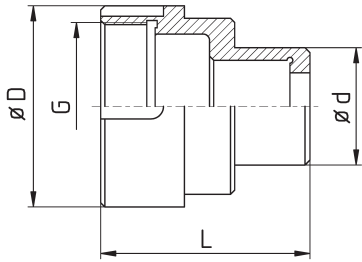


MU-CIT-M216/B/F20

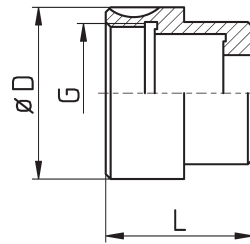


Bestell-Nr. order-no.	Maschine / Typ machine / type	A / B - Spindel	D	G	L	d	verl. ext. [mm]	Zange collet
MU-CIT-A20/AB/F25	CITIZEN CINCOM A20	A+B	65	M55x1,5	40			145E / F25
MU-CIT-A32CL/A/F37	CITIZEN CINCOM A32VII CL	A	100	-	28			1536E / F37
MU-CIT-A32CL/A/F40	CITIZEN CINCOM A32VII CL	A	100	-	28			F40
MU-CIT-B12/A/F15	CITIZEN CINCOM B12	A	42	M32x1	32			120E / F15
MU-CIT-B12/A/F16	CITIZEN CINCOM B12	A	42	M32x1	21			1212E / F16
MU-CIT-B12/B/F10v10	CITIZEN CINCOM B12	B	42	M32x1	35	24	10	109E / F10
MU-CIT-B12/B/F13	CITIZEN CINCOM B12	B	42	M32x1				116E / F13
MU-CIT-B12/B/F15	CITIZEN CINCOM B12	B	42	M32x1	25			120E / F15
MU-CIT-B12/B/F16	CITIZEN CINCOM B12	B	42	M32x1	25			1212E / F16
MU-CIT-K12/A/F15	CITIZEN CINCOM K12	A	48	M40x1,5	65			120E / F15
MU-CIT-K12/A/F16	CITIZEN CINCOM K12	A	48	M40x1,5	65			1212E / F16
MU-CIT-K12/B/F8v10	CITIZEN CINCOM K12	B	48	M40x1,5	42	17	10	101E / F8
MU-CIT-K12/B/F10v15	CITIZEN CINCOM K12	B	48	M40x1,5	47	24	15	109E / F10
MU-CIT-K12/B/F13	CITIZEN CINCOM K12	B	48	M40x1,5	32			116E / F13
MU-CIT-K12/B/F15	CITIZEN CINCOM K12	B	48	M40x1,5	32			120E / F15
MU-CIT-K12/B/F15v15	CITIZEN CINCOM K12	B	48	M40x1,5	47	28	15	120E / F15
MU-CIT-K12/B/F15v18	CITIZEN CINCOM K12	B	48	M40x1,5	50	28	18	120E / F15
MU-CIT-K12/B/F16	CITIZEN CINCOM K12	B	48	M40x1,5	32			1212E / F16
MU-CIT-K16/B/F20	CITIZEN CINCOM K16	B	48	M40x1,5	32			138E / F20
MU-CIT-L16/B/F15v15	CITIZEN CINCOM L16VII; M20	B	60	M50x1,5	55			120E / F15
MU-CIT-L16/B/F20	CITIZEN CINCOM L16VII; M20	B	60	M50x1,5	38			138E / F20
MU-CIT-L2012//F25	CITIZEN CINCOM L20-12		63	M55x1,5	54			145E / F25
MU-CIT-L220X/B/F25	CITIZEN CINCOM L ₂ 20X	B	63	M55x1,5	54			145E / F25
MU-CIT-L520/A/F25	CITIZEN CINCOM L520VIII	A	60	M50x1,5	58			145E / F25
MU-CIT_L520/A/F27	CITIZEN CINCOM L520VIII	A	60	M50x1,5	58			147E / F27
MU-CIT-L520/B/F25	CITIZEN CINCOM L520VIII	B	60	M50x1,5	47			145E / F25
MU-CIT-M12/B/F15	CITIZEN CINCOM M12	B	45	M35x1,5	32			120E / F15
MU-CIT-M12/B/F16	CITIZEN CINCOM M12	B	45	M35x1,5				1212E / F16
MU-CIT-M216/B/F10v15	CITIZEN CINCOM M ₂ 16	B	48	M40x1,5	47		15	109E / F10
MU-CIT-M216/B/F13v15	CITIZEN CINCOM M ₂ 16	B	48	M40x1,5	47	28	15	116E / F13
MU-CIT-M216/B/F15	CITIZEN CINCOM M ₂ 16	B	48	M40x1,5				120E / F15

A = Hauptspindel - main spindle B = Abgreifspindel - sub spindle



MU-CIT-M216/B/F16v18

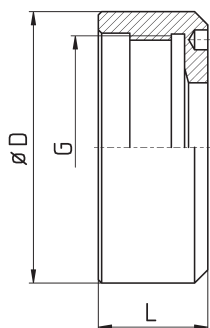


MU-CIT-R07/B/F10

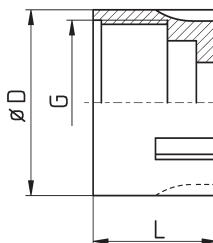


Bestell-Nr. order-no.	Maschine / Typ machine / type	A / B - Spindel	D	G	L	d	verl. ext. [mm]	Zange collet
MU-CIT-M216/B/F15v15	CITIZEN CINCOM M ₂ 16	B	48	M40x1,5	48	28	15	120E / F15
MU-CIT-M216/B/F15v18	CITIZEN CINCOM M ₂ 16	B	48	M40x1,5	50	28	18	120E / F15
MU-CIT-M216/B/F16v15	CITIZEN CINCOM M ₂ 16	B	48	M40x1,5	47	28	15	1212E / F16
MU-CIT-M216/B/F16v18	CITIZEN CINCOM M ₂ 16	B	48	M40x1,5	50	28	18	1212E / F16
MU-CIT-M216/B/F16	CITIZEN CINCOM M ₂ 16	B	48	M40x1,5	32			1212E / F16
MU-CIT-M216/B/F20	CITIZEN CINCOM M ₂ 16	B	48	M40x1,5	32			138E / F20
MU-CIT-M32/A/F37	CITIZEN CINCOM M32	A	75	M65x1,5	74			1536E / F37
MU-CIT-M32/B/F20	CITIZEN CINCOM M32	B	76	M65x1,5	53			138E / F20
MU-CIT-M32/B/F37	CITIZEN CINCOM M32	B	76	M65x1,5	53			1536E / F37
MU-CIT-M432/A/F20	CITIZEN CINCOM M ₄ 32	A	80	M70x1,5	74			138E / F20
MU-CIT-M432/A/F25	CITIZEN CINCOM M ₄ 32	A	80	M70x1,5	74			145E / F25
MU-CIT-M432/A/F37	CITIZEN CINCOM M ₄ 32	A	80	M70x1,5	74			1536E / F37
MU-CIT-M432/A/F40	CITIZEN CINCOM M ₄ 32	A	80	M70x1,5	74			F40
MU-CIT-M432/B/F20	CITIZEN CINCOM M ₄ 32	B	76	M65x1,5	58			138E / F20
MU-CIT-M432/B/F25	CITIZEN CINCOM M ₄ 32	B	76	M65x1,5	58			145E / F25
MU-CIT-M432/B/F37	CITIZEN CINCOM M ₄ 32	B	76	M65x1,5	58			1536E / F37
MU-CIT-M432/B/F40	CITIZEN CINCOM M ₄ 32	B	76	M65x1,5	58			F40
MU-CIT-ML12/A/F13	CITIZEN CINCOM ML12	A	47	M40x1,5	43,5			116E / F13
MU-CIT-ML12/A/F15	CITIZEN CINCOM ML12	A	47	M40x1,5	43,5			120E / F15
MU-CIT-ML12/A/F16	CITIZEN CINCOM ML12	A	47	M40x1,5	43,5			1212E / F16
MU-CIT-R07/B/F10	CITIZEN CINCOM R07	B	35	M28x1	30			109E / F10
MU-CIT-R207/B/F13	CITIZEN CINCOM R ₂ 07	B	35	M28x1	30			116E / F13
MU-FEIN-FA10//F15	FEINLER FA10		38	M32x1,5	23			120E / F15
MU-INDE-18//F28	INDEX 18		68	M58x2L	31,5			148E / F28

A = Hauptspindel - main spindle B = Abgreifspindel - sub spindle



MU-SPIN-TC32//F38

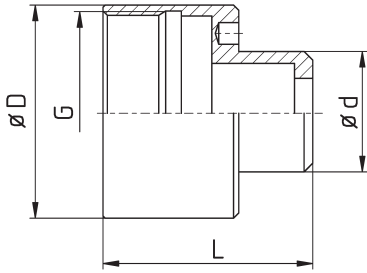


MU-TORN-DECO2000-13//136E

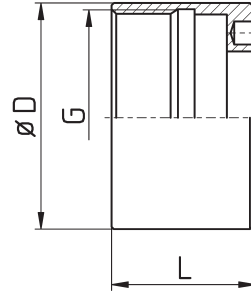


Bestell-Nr. order-no.	Maschine / Typ machine / type	A / B - Spindel	D	G	L	d	verl. ext. [mm]	Zange collet
MU-INDE-25//F28	INDEX 25		72	M63x2L	31,5			148E / F28
MU-INDE-52//F66	INDEX 52		117	M108x2L	41,5			185E / F66
MU-INDE-B30//F35	INDEX B30		88	M74x2L	38,5			163E / F35
MU-INDE-B42//F48	INDEX B42; 36		97	M85x2L	38,5			173E / F48
MU-INDE-B60//F66	INDEX B60		122	M108x2L	34			185E / F66
MU-INDE-C19//F28	INDEX C19		73	M63x2L	34			148E / F28
MU-INDE-C29//F28	INDEX C29		84,5	M74x2L	35			148E / F28
MU-INDE-C29//F35	INDEX C29		84,5	M74x2L	35			163E / F35
MU-INDE-DG12//F22	INDEX DG12		62	M52x2L	23			140E / F22
MU-INDE-ON12//136E	INDEX ON12; OR12		45	M40x1,5L	41			136E / F20
MU-SPIN-PD42//F48	SPINNER PD42		90	M80x2	35			173E / F48
MU-SPIN-TC32//F35	SPINNER TC32		82	M68x3	33			163E / F35
MU-SPIN-TC32//F38	SPINNER TC32		82	M68x3	33			164E / F38
MU-STRO-M105//F15	STROHM M105 - 125		34	M30x1,5	20			120E / F15
MU-STRO-M125AS/F15	STROHM M125AS		35,5	M32x1,5	35			120E / F15
MU-STRO-M205//F25	STROHM M205; M255		63	M56x1,5	40			145E / F25

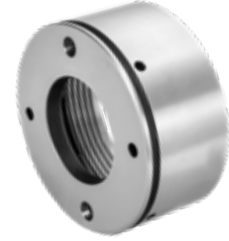
A = Hauptspindel - main spindle B = Abgreifspindel - sub spindle



MU-TSUG-HS207/B/F15v15



MU-TSUG-HS207/B/F25



Bestell-Nr. order-no.	Maschine / Typ machine / type	A / B - Spindel	D	G	L	d	verl. ext. [mm]	Zange collet
MU-TORN-AS14/B/F16	TORNOS AS14 / SAS16	B	38	M32x1L	15			1212E / F16
MU-TORN-DECO2000-13//136E	TORNOS DECO2000/13	AB	45	M40x1,5	30			136E / F20
MU-TORN-DECO2000-13/AB/F13v12	TORNOS DECO2000/13	AB	45	M40x1,5	42	30	12	116E / F13
MU-TORN-EVODECO16//F13v12	TORNOS EVODECO16		45	M40x1,5	48	30	12	116E / F13
MU-TORN-GAMMA//F13v12	TORNOS GAMMA		49	M46x1,5	44	27,3	12	116E / F13
MU-TORN-R10//F15	TORNOS R10		37,5	M33x1,25L	17			120E / F15
MU-TRAU-A20//F22	TRAUB A20		63	M52x3	39			140E / F22
MU-TRAU-A20//F28	TRAUB A20		63	M52x3	39			148E / F28
MU-TRAU-A25//F22	TRAUB A25		72	M62x2,5	39			140E / F22
MU-TRAU-A25//F32	TRAUB A25		72	M62x2,5	39			161E / F32
MU-TRAU-A42//F32	TRAUB A42; TB42		91	M80x3	46			161E / F32
MU-TRAU-A42//F48	TRAUB A42; TB42		91	M80x3	46			173E / F48
MU-TRAU-TD26//F32	TRAUB TD26 ab 1976		78	M70x3	40			161E / F32
MU-TRAU-TD26alt//F32	TRAUB TD26 bis 1976		78	M70x3	40			161E / F32
MU-TRAU-TD36alt//F42	TRAUB TD36 bis 1976		86	M80x3	40			171E / F42
MU-TRAU-TNL16/F20	TRAUB TNL16		50		30			138E/F20
MU-TSUG-BS32/A/F37	TSUGAMI BS32	A	81,8	M70x1,5	50			1536E / F37
MU-TSUG-HS207/B/F15v15	TSUGAMI HS207	B	49	M46x1,5	48	27,3	15	120E / F15
MU-TSUG-HS207/B/F25	TSUGAMI HS207	B	49	M46x1,5	31			145E / F25
MU-BOL-BC42/A/140E	BOLEY BC42	A	48	M40x1,5	65			140E / F22

A = Hauptspindel - main spindle B = Abgreifspindel - sub spindle

Überwurfmuttern für Druckhülsen, STAR

Cap Nuts for Collet Sleeves, STAR

Identische Überwurfmuttern unterschiedlicher Maschinentypen
Identical cap nuts for collet sleeves for different machine types

Spindel spindle	A	B	Standardzange standard collet	Spindel spindle	A	B	Standardzange standard collet	Spindel spindle	A	B	Standardzange standard collet
Maschine machine				Maschine machine				Maschine machine			
SW7 SR10J	1		F15 / 120E	SR16R ECAS20 KNC20 SB20	10 10 13 11	14 15 16 14		ECAS32 JNC32 KNC32 SR32	17 18 18 17	19	
SB12RG SB12RN SB12RE SW12RII	24 24 24 24	26 26 26 25	F16/ 1212E	SB20RE SB20RN SB20RG SR20 SR20J	10 12 12 13 11	14 14 14 16 14	F25 / 145E	SR32J (neu) SR32JII SR32JN SV32 SV32J VNC32	17 27 19 17 17 18	19 28 19	F37 / 1536E
SA12 SA16 SB12 SB16 ECAS12 ECAS16 SV12 SW12R KJR16 RNC16 (neu) RNC16 (alt) SA16R SR16 SST16	2 2 2 2 7 7 4 5 3 3 4 5 5	6 6 6 6 7 7 6 8 8 8 6 8 8	F20 / 138E	SR20JII SR20JN SR20R I / II / III SR20R IV SV20 SV20R SW20 ST20 VNC20	10 29 10 29 11 29 10 10 13	14 15 14 15 14 15 15 15		ST38 SV38R SR38	23 22 22	23 23 23	F48 / 173E

Hauptspindel (A)
Gegenspindel (B)

main spindle (A)
sub spindle (B)

Maschinen mit gleicher Nummer haben identische Überwurfmuttern.

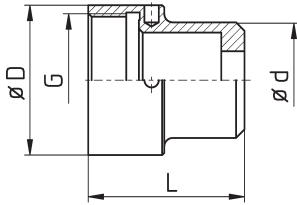
Machines with identical number have identical nuts.

Ist keine Nummer angegeben, gibt es keine weiteren kompatiblen Maschinen.

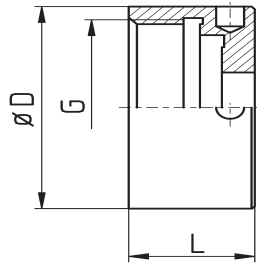
If a number is not specified there is no other compatible machine.

Sind die Muttern mehrerer Maschinen miteinander kompatibel, werden nur die Muttern der grau unterlegten Maschinen in den Maßtabellen aufgeführt.

If nuts of different machines are identical only the grey marked machine types will be found in the list.



MU-STAR-SW7/B/F13v15



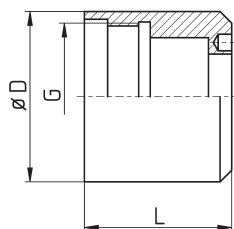
MU-STAR-SA12/B/F15



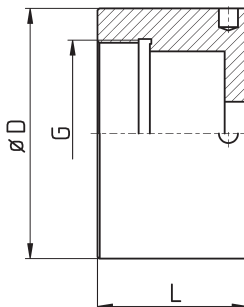
MU-STAR-SA12/B/F15

Bestell-Nr. order-no.	Maschine / Typ machine / type	A / B - Spindel	D	G	L	d	vert. ext. [mm]	Zange collet
MU-STAR-SW7/B/F7v15	STAR SW7	B	42	M36x1,5	42,5	18	15	1020E / F7
MU-STAR-SW7/B/F10v17	STAR SW7	B	42	M36x1,5	44,5	24	17	109E / F10
MU-STAR-SW7/B/F15	STAR SW7	B	42	M36x1,5	27,5			120E / F15
MU-STAR-SR10J/A/F8	STAR SR10J	A	42	M36x1,5	23			109E / F8
MU-STAR-SR10J/A/F15	STAR SR10J	A	42	M36x1,5	23			120E / F15
MU-STAR-SR10J/B/F8	STAR SR10J	B	35	M31x1,5	18			101E / F8
MU-STAR-SR10J/B/F8v10	STAR SR10J	B	35	M31x1,5	28	17	10	101E / F8
MU-STAR-SR10J/B/F10v15	STAR SR10J	B	35	M31x1,5	33	24	15	109E / F10
MU-STAR-SR10J/B/F13	STAR SR10J	B	35	M31x1,5	18			116E / F13
MU-STAR-SR10J/B/F13v10	STAR SR10J	B	35	M31x1,5	29	28	10	116E / F13
MU-STAR-SR10J/B/F13v15	STAR SR10J	B	35	M31x1,5	34	28	15	116E / F13
MU-STAR-SR10J/B/F15	STAR SR10J	B	35	M31x1,5	18			120E / F15
MU-STAR-SA12/A/F15	STAR SA12	A	55	M44x1,5	42			120E / F15
MU-STAR-SA12/A/F20	STAR SA12	A	55	M44x1,5	42			138E / F20
MU-STAR-SA12/B/F10v10	STAR SA12	B	46	M40x1,5	33	24	10	109E / F10
MU-STAR-SA12/B/F10v15	STAR SA12	B	46	M40x1,5	38	24	15	109E / F10
MU-STAR-SA12/B/F15	STAR SA12	B	46	M40x1,5	23			120E / F15
MU-STAR-SA12/B/F20	STAR SA12	B	46	M40x1,5	23			138E / F20
MU-STAR-SB12RG/A/136E	STAR SB12R-G	A	44	M38x1,5	35			136E / F20
MU-STAR-SB12RG/A/F10	STAR SB12R-G	A	44	M38x1,5	35			109E / F10
MU-STAR-SB12RG/A/F15	STAR SB12R-G	A	44	M38x1,5	35			120E / F15
MU-STAR-SB12RG/A/F16	STAR SB12R-G	A	44	M38x1,5	35			1212E / F16
MU-STAR-SB12RG/B/F16	STAR SB12R-G	B	59	M50x1	41			1212E / F16
MU-STAR-ECAS12/B/F20	STAR ECAS12	B	55	M45x1,5	38			138E / F20

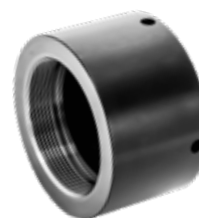
A = Hauptspindel - main spindle B = Abgreifspindel - sub spindle



MU-STAR-RNC16/B/F20v15



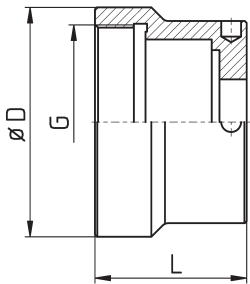
MU-STAR-SR20R/A/F16



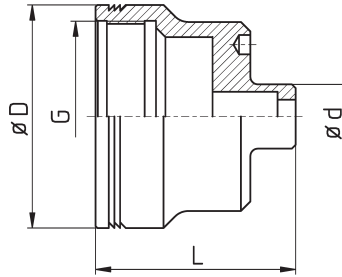
MU-STAR-SR20R/A/F25

Bestell-Nr. order-no.	Maschine / Typ machine / type	A / B - Spindel	D	G	L	d	verl. ext. [mm]	Zange collet
MU-STAR-SV12/A/F10v48	STAR SV12	A	55	M45x1,5	86	23,8	48	109E / F10
MU-STAR-SV12/A/F20	STAR SV12	A	55	M45x1,5	38			138E / F20
MU-STAR-SW12R/B/F10v10	STAR SW12R II	B	46	M40x1,5	46	25	10	109E / F10
MU-STAR-SW12R/B/F10v15	STAR SW12R II	B	46	M40x1,5	51	24	15	109E / F10
MU-STAR-SW12R/B/F13	STAR SW12R II	B	46	M40x1,5	36			116E / F13
MU-STAR-SW12R/B/F15	STAR SW12R II	B	46	M40x1,5	36			120E / F15
MU-STAR-SW12R/B/F16	STAR SW12R II	B	46	M40x1,5	36			1212E / F16
MU-STAR-SW12R/B/136E	STAR SW12R II	B	46	M40x1,5	36			136E / F20
MU-STAR-SB16/A/F20	STAR SB16	A	49,5	M44x1,5	40			138E / F20
MU-STAR-RNC16/A/F20	STAR RNC16	A	49,5	M44x1,5	40			138E / F20
MU-STAR-RNC16alt/B/F15	STAR RNC16 alt	B	39,5	M33x1,5	25			120E / F15
MU-STAR-SST16/B/F20	STAR SST16	B	50	M44x1,5	30			138E / F20
MU-STAR-SB20RN/A/F25	STAR SB20RN	A	65	M50x1,5	37			145E / F25
MU-STAR-SB20RN/A/F27	STAR SB20RN	A	65	M50x1,5	37			147E / F27
MU-STAR-SB20RN/B/F25	STAR SB20RN	B	59	M50x1	41			145E / F25
MU-STAR-SB20RN/B/F27	STAR SB20RN	B	59	M50x1	39			147E / F27
MU-STAR-SB20RN/B/F27L	STAR SB20RN	B	59	M50x1	41			147E / F27
MU-STAR-ECAS20/B/F8v15	STAR ECAS20	B	59	M50x1,5	54	17	15	101E / F8
MU-STAR-ECAS20/B/F10v15	STAR ECAS20	B	59	M50x1,5	54	24	15	109E / F10
MU-STAR-ECAS20/B/F13v15	STAR ECAS20	B	59	M50x1,5	54	28	15	116E / F13
MU-STAR-ECAS20/B/F15v15	STAR ECAS20	B	59	M50x1,5	54	28	15	120E / F15
MU-STAR-ECAS20/B/F16v15	STAR ECAS20	B	59	M50x1,5	54	28	15	1212E / F16
MU-STAR-ECAS20/B/136E	STAR ECAS20	B	59	M50x1,5	39			136E / F20
MU-STAR-ECAS20/B/F25	STAR ECAS20	B	59	M50x1,5	39			145E / F25
MU-STAR-ECAS20/B/F27	STAR ECAS20	B	59	M50x1,5	36			147E / F27
MU-STAR-ECAS20/B/F27L	STAR ECAS20	B	59	M50x1,5	39			147E / F27

A = Hauptspindel - main spindle B = Abgreifspindel - sub spindle



MU-STAR-ECAS20/B/F20



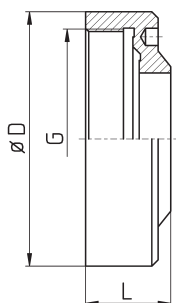
MU-STAR-SR20/B/F8v12



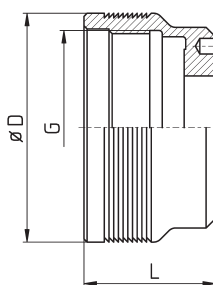
MU-STAR-SR20/B/F10v15

Bestell-Nr. order-no.	Maschine / Typ machine / type	A / B - Spindel	D	G	L	d	verl. ext. [mm]	Zange collet
MU-STAR-SR20/A/F27	STAR SR20	A	64	M56x1,5				147E / F27
MU-STAR-SR20/B/F10v15	STAR SR20	B	59	M50x1	56	24	15	109E / F10
MU-STAR-SR20/B/F25	STAR SR20	B	59	M50x1	41			145E / F25
MU-STAR-SR20/B/F27	STAR SR20	B	59	M50x1	41			147E / F27
MU-STAR-SR20JN/A/F25	STAR SR20JN	A	67	M56x1,5	28			145E / F25
MU-STAR-SR20JN/A/F27	STAR SR20JN	A	67	M56x1,5	28			147E / F27
MU-STAR-SR20JII/A/F25	STAR SR20JII	A	65	M50x1,5	37			145E / F25
MU-STAR-SR20JII/A/F27	STAR SR20JII	A	65	M50x1,5	37			147E / F27
MU-STAR-SR20R/A/F16	STAR SR20R I / II / III	A	67	M50x1,5	40			1212E / F16
MU-STAR-SR20R/A/F20	STAR SR20R I / II / III	A	67	M50x1,5	40			138E / F20
MU-STAR-SR20R/A/F25	STAR SR20R I / II / III	A	67	M50x1,5	40			145E / F25
MU-STAR-SR20R/A/F27	STAR SR20R I / II / III	A	67	M50x1,5	40			147E / F27
MU-STAR-SR20R/B/F8v15	STAR SR20R I / II / III	B	59	M50x1	53	17	15	101E / F8
MU-STAR-SR20R/B/F10v15	STAR SR20R I / II / III	B	59	M50x1	56	24	15	109E / F10
MU-STAR-SR20R/B/F13v15	STAR SR20R I / II / III	B	59	M50x1	56	28	15	116E / F13
MU-STAR-SR20R/B/F15v8	STAR SR20R I / II / III	B	59	M50x1	49	28	8	120E / F15
MU-STAR-SR20R/B/F15v15	STAR SR20R I / II / III	B	59	M50x1	56	28	15	120E / F15
MU-STAR-SR20R/B/136E	STAR SR20R I / II / III	B	59	M50x1	41			136E / F20
MU-STAR-SR20R/B/F20	STAR SR20R I / II / III	B	59	M50x1				138E / F20
MU-STAR-SR20R/B/F25	STAR SR20R I / II / III	B	59	M50x1	41			145E / F25
MU-STAR-SR20R/B/F27	STAR SR20R I / II / III	B	59	M50x1	39			147E / F27
MU-STAR-SR20R/B/F27L	STAR SR20R I / II / III	B	59	M50x1	41			147E / F27
MU-STAR-SR20R4/A/F25	STAR SR20RIV	A	65	M50x1,5	37			145E / F25
MU-STAR-SR20R4/A/F27	STAR SR20RIV	A	65	M50x1,5	37			147E / F27
MU-STAR-SR20R4/A/F15v15	STAR SR20RIV	A	65	M50x1,5	52	28	15	120E / F15

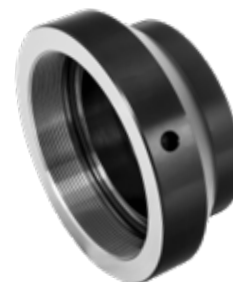
A = Hauptspindel - main spindle B = Abgreifspindel - sub spindle



MU-STAR-SR32JN/A/F37



MU-STAR-KNC32/B/F30



MU-STAR-SR38/A/F37

Bestell-Nr. order-no.	Maschine / Typ machine / type	A / B - Spindel	D	G	L	d	verl. ext. [mm]	Zange collet
MU-STAR-SV20/A/F25	STAR SV20	A	67	M56x1,5	28			145E / F25
MU-STAR-SV20/A/F27	STAR SV20	A	67	M56x1,5	28			147E / F27
MU-STAR-ECAS32/B/F20v23	STAR ECAS32	B	85	M62x1	63	38	23	138E / F20
MU-STAR-ECAS32/B/F37	STAR ECAS32	B	85	M62x1	43			1536E / F37
MU-STAR-KNC32/A/F37	STAR KNC32	A	88	M76x1,5	42			1536E / F37
MU-STAR-KNC32/B/F25	STAR KNC32	B	73	M62x1	42			145E / F25
MU-STAR-KNC32/B/F37	STAR KNC32	B	73	M62x1	42			1536E / F37
MU-STAR-SR32JN/A/F37	STAR SR32JN	A	81	M70x1,5	27			1536E / F37
MU-STAR-SR32JN/A/F40	STAR SR32JN	A	81	M70x1,5	27			F40
MU-STAR-SR32JII/A/F37	STAR SR32JII	A	81	M68x1,5	52			1536E / F37
MU-STAR-SR32JII/A/F40	STAR SR32JII	A	81	M68x1,5	52			F40
MU-STAR-SR32JII/B/F37	STAR SR32JII	B	73	M62x1	42			1536E / F37
MU-STAR-SR32JII/B/F40	STAR SR32JII	B	73	M62x1	42			F40
MU-STAR-SV32/A/F25	STAR SV32	A	90	M76x1,5	35			145E / F25
MU-STAR-SV32/A/F37	STAR SV32	A	90	M76x1,5	35			1536E / F37
MU-STAR-SV32/A/F40	STAR SV32	A	90	M76x1,5	35			F40
MU-STAR-SV32/B/F20v20	STAR SV32	B	73	M62x1	63	38	20	138E / F20
MU-STAR-SV32/B/F25	STAR SV32	B	73	M62x1				145E / F25
MU-STAR-SV32/B/F30	STAR SV32	B	73	M62x1				1446E / F30
MU-STAR-SV32/B/F37	STAR SV32	B	73	M62x1	43			1536E / F37
MU-STAR-SV32/B/F40	STAR SV32	B	73	M62x1	43			F40
MU-STAR-ST38/A/F37	STAR ST38	A	105	M85x1,5	46,5			1536E / F37
MU-STAR-ST38/A/F42	STAR ST38	A	105	M85x1,5	46,5			171E / F42
MU-STAR-ST38/A/F48	STAR ST38	A	105	M85x1,5	46,5			173E / F48
MU-STAR-ST38/B/F25v20	STAR ST38	B	105	M85x1,5	47,5		20	145E / F25
MU-STAR-ST38/B/F37	STAR ST38	B	105	M85x1,5	47,5			1536E / F37
MU-STAR-ST38/B/F42	STAR ST38	B	105	M85x1,5	47,5			171E / F42
MU-STAR-ST38/B/F48	STAR ST38	B	105	M85x1,5	47,5			173E / F48
MU-STAR-SV38R/A/F37	STAR SV38-R	A	94	M80x1,5	70			1536E / F37
MU-STAR-SV38R/A/F48	STAR SV38-R	A	94	M80x1,5	70			173E / F48

A = Hauptspindel - main spindle B = Abgreifspindel - sub spindle