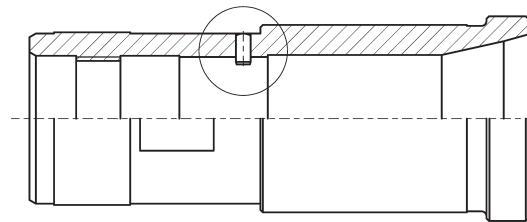
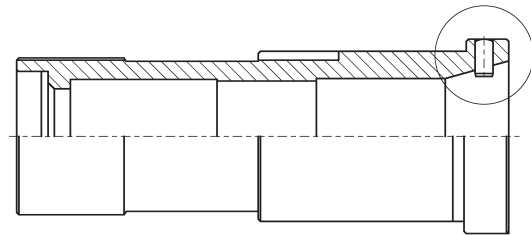
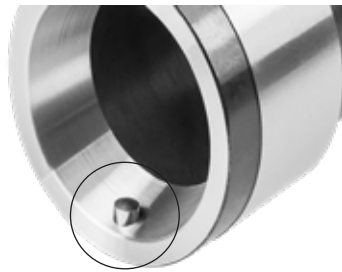


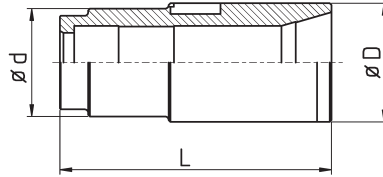
## Druckhülsen *Collet Sleeves*



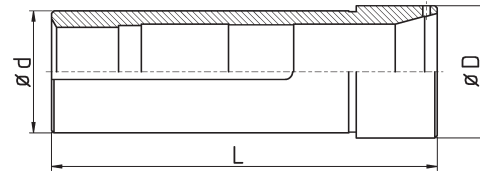
*passion for clamping*

**Technische Informationen****Technical Information****Verstiften von Druckhülsen****Pinned Collet Sleeves****auf Wunsch mit Aufpreis****optional for extra charge**

DH-BENZ-TNI20/F20



DH-CIT-C32/A/F37

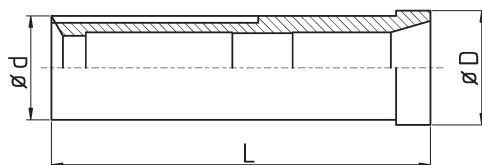


DH-CIT-A20/B/F25

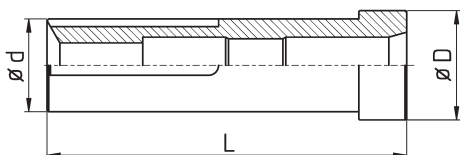
| Bestell-Nr.<br>order-no. | Maschine / Typ<br>machine / type | A / B -<br>Spindel | D    | d     | L     | verl.<br>ext.<br>[mm] | Zange<br>collet | Feder<br>spring |
|--------------------------|----------------------------------|--------------------|------|-------|-------|-----------------------|-----------------|-----------------|
| DH-BECH-AR10//F14        | BECHLER AR10                     |                    | 24   | 20    | 62    |                       | 117E / F14      |                 |
| DH-BENZ-TNI20/F20        | BENZINGER TNI 20                 |                    | 33   | 30/26 | 75,5  |                       | 138E / F20      |                 |
| DH-BOLE-BC42//F48        | BOLEY BC42                       |                    | 64,5 | 60    | 160,2 |                       | 173E / F48      |                 |
| DH-CIT-A20/AB/F25        | CITIZEN CINCOM A20               | A + B              | 44   | 42/40 | 126   |                       | 145E / F25      |                 |
| DH-CIT-A32/A/F37         | CITIZEN CINCOM A32               | A                  | 61   | 58    | 171   |                       | 1536E / F37     |                 |
| DH-CIT-A32/A/F40         | CITIZEN CINCOM A32               | A                  | 61   | 58    | 171   |                       | F40             |                 |
| DH-CIT-A32/B/F37         | CITIZEN CINCOM A32               | B                  | 58   | 54    | 147,7 |                       | 1536E / F37     |                 |
| DH-CIT-A32CL/A/F37       | CITIZEN CINCOM A32VII CL         | A                  | 65   | 55    | 170   |                       | 1536E / F37     |                 |
| DH-CIT-A32CL/A/F40       | CITIZEN CINCOM A32VII CL         | A                  | 65   | 55    | 170   |                       | F40             |                 |
| DH-CIT-A320/AB/F25       | CITIZEN CINCOM A <sub>3</sub> 20 | A+B                | 42   | 42    | 127   |                       | 145E / F25      |                 |
| DH-CIT-B12/A/F15         | CITIZEN CINCOM B12               | A                  | 24,5 | 23    | 89    |                       | 120E / F15      | DF15F 11.5-33   |
| DH-CIT-B12E/A/F15        | CITIZEN CINCOM B12E              | A                  | 33   | 28    | 109   |                       | 120E / F15      |                 |
| DH-CIT-B12/A/F16         | CITIZEN CINCOM B12               | A                  | 24,5 | 23    | 89    |                       | 1212E / F16     |                 |
| DH-CIT-B12/B/F10v10      | CITIZEN CINCOM B12               | B                  | 28   | 23    | 90    | 10                    | 109E / F10      |                 |
| DH-CIT-B12/B/F13         | CITIZEN CINCOM B12               | B                  | 28   | 23    | 90    |                       | 116E / F13      | DF13R 10-36     |
| DH-CIT-B12/B/F15         | CITIZEN CINCOM B12               | B                  | 28   | 23    | 90    |                       | 120E / F15      |                 |
| DH-CIT-B12/B/F16         | CITIZEN CINCOM B12               | B                  | 28   | 23    | 90    |                       | 1212E / F16     |                 |
| DH-CIT-C16/A/F22         | CITIZEN CINCOM C16               | A                  | --   | --    | --    |                       | 140E / F22      |                 |
| DH-CIT-C32/A/F37         | CITIZEN CINCOM C32               | A                  | 52   | 48    | 152   |                       | 1536E / F37     |                 |
| DH-CIT-E32/A/F37         | CITIZEN CINCOM E32               | A                  | 59   | 50    | 142   |                       | 1536E / F37     |                 |
| DH-CIT-E32/B/F37         | CITIZEN CINCOM E32               | B                  | 59   | 50    | 160   |                       | 1536E / F37     |                 |
| DH-CIT-K12/A/F15         | CITIZEN CINCOM K12               | A                  | 33   | 28    | 180   |                       | 120E / F15      |                 |
| DH-CIT-K12/A/F16         | CITIZEN CINCOM K12               | A                  | 33   | 25    | 180   |                       | 1212E / F16     | DF16F 12.5-34   |
| DH-CIT-K12/B/F8v10       | CITIZEN CINCOM K12               | B                  | 30   | 30    | 110   | 10                    | 101E / F8       |                 |
| DH-CIT-K12/B/F10v15      | CITIZEN CINCOM K12               | B                  | 30   | 30    | 126   | 15                    | 109E / F10      |                 |
| DH-CIT-K12/B/F13         | CITIZEN CINCOM K12               | B                  | 30   | 30    | 110   |                       | 116E / F13      |                 |
| DH-CIT-K12/B/F15         | CITIZEN CINCOM K12               | B                  | 30   | 30    | 110   |                       | 120E / F15      |                 |
| DH-CIT-K12/B/F15v15      | CITIZEN CINCOM K12               | B                  | 30   | 30    | 110   | 15                    | 120E / F15      |                 |
| DH-CIT-K12/B/F16         | CITIZEN CINCOM K12               | B                  | 30   | 30    | 110   |                       | 1212E / F16     |                 |
| DH-CIT-K16/A/F20         | CITIZEN CINCOM K16               | A                  | 33   | 28    | 180   |                       | 138E / F20      | DF20F 18-45     |
| DH-CIT-K16/A/F22         | CITIZEN CINCOM K16               | A                  | 33   | 28    | 180   |                       | 140E / F22      |                 |

A = Hauptspindel - main spindle    B = Abgreifspindel - sub spindle

DH-CIT-M216/B/F20



DH-CIT-ML12/A/F16

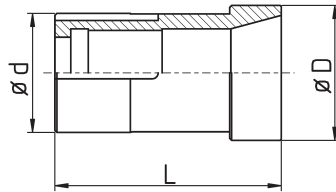


DH-CIT-ML12/A/F16

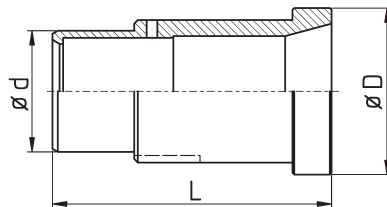
| Bestell-Nr.<br>order-no. | Maschine / Typ<br>machine / type      | A / B -<br>Spindel | D    | d    | L     | verl.<br>ext.<br>[mm] | Zange<br>collet | Feder<br>spring |
|--------------------------|---------------------------------------|--------------------|------|------|-------|-----------------------|-----------------|-----------------|
| DH-CIT-K16/B/F20         | CITIZEN CINCOM K16                    | B                  | 33   | 30   | 110   |                       | 138E / F20      |                 |
| DH-CIT-L16/A/F25         | CITIZEN CINCOM L16VI/VII;<br>M20; L20 | A                  | 46   | 35   | 103   |                       | 145E / F25      |                 |
| DH-CIT-L16/B/F20         | CITIZEN L16                           | B                  | 44   | 35   | 121,5 |                       | 138E / F20      |                 |
| DH-CIT-L16/B/F25         | CITIZEN CINCOM L16VII; M20            | B                  | 44   | 35   | 121,5 |                       | 145E / F25      |                 |
| DH-CIT-L32/A/F37         | CITIZEN CINCOM L32                    | A                  | 64,5 | 60   | 158   |                       | 1536E / F37     |                 |
| DH-CIT-L32/B/F37         | CITIZEN CINCOM L32                    | B                  | 53   | 60   | 147,5 |                       | 1536E / F37     |                 |
| DH-CIT-L220X/B/F25       | CITIZEN CINCOM L <sub>2</sub> 20X     | B                  | 42   | 42   | 132   |                       | 145E / F25      |                 |
| DH-CIT-L520/A/F25        | CITIZEN CINCOM L520VIII               | A                  | 41,5 | 35   | 198   |                       | 145E / F25      |                 |
| DH-CIT-L520/A/F27        | CITIZEN CINCOM L520VIII               | A                  | 41,5 | 35   | 198   |                       | 147E / F27      |                 |
| DH-CIT-L520/B/F25        | CITIZEN CINCOM L520VIII               | B                  | 41   | 35   | 121,5 |                       | 145E / F25      |                 |
| DH-CIT-M12/B/F13         | CITIZEN CINCOM M12                    | B                  | 28   | 24,5 | 98    |                       | 116E / F13      |                 |
| DH-CIT-M12/B/F15         | CITIZEN CINCOM M12                    | B                  | 28   | 24,5 | 98    |                       | 120E / F15      |                 |
| DH-CIT-M12/B/F16         | CITIZEN CINCOM M12                    | B                  | 28   | 24,5 | 98    |                       | 1212E / F16     |                 |
| DH-CIT-M16/A/F15         | CITIZEN CINCOM M16                    | A                  | 36   | 30   | 108,7 |                       | 120E / F15      |                 |
| DH-CIT-M16/A/F16         | CITIZEN CINCOM M16                    | A                  | 36   | 30   | 108,7 |                       | 1212E / F16     |                 |
| DH-CIT-M16/A/144E        | CITIZEN CINCOM M16                    | A                  | 36   | 30   | 110   |                       | 144E / F25      |                 |
| DH-CIT-M16/B/F10v15      | CITIZEN CINCOM M16                    | B                  | 33   | 30   | 127,5 | 15                    | 109E / F10      |                 |
| DH-CIT-M16/B/F15v15      | CITIZEN CINCOM M16                    | B                  | 33   | 30   | 127,5 | 15                    | 120E / F15      |                 |
| DH-CIT-M16/B/F16         | CITIZEN CINCOM M16                    | B                  | 33   | 30   | 108,7 |                       | 1212E / F16     |                 |
| DH-CIT-M216/A/F20        | CITIZEN CINCOM M <sub>2</sub> 16      | A                  | 36   | 30   | 110   |                       | 138E / F20      |                 |
| DH-CIT-M216/B/F13v15     | CITIZEN CINCOM M <sub>2</sub> 16      | B                  | 33   | 30   | 128   | 15                    | 116E / F13      |                 |
| DH-CIT-M216/B/F15        | CITIZEN CINCOM M <sub>2</sub> 16      | B                  | 33   | 30   | 110   |                       | 120E / F15      |                 |
| DH-CIT-M216/B/F15v15     | CITIZEN CINCOM M <sub>2</sub> 16      | B                  | 33   | 30   | 128   | 15                    | 120E / F15      | DF15F 11.5-33   |
| DH-CIT-M216/B/F16v15     | CITIZEN CINCOM M <sub>2</sub> 16      | B                  | 33   | 30   | 128   | 15                    | 1212E / F16     |                 |
| DH-CIT-M216/B/F20        | CITIZEN CINCOM M <sub>2</sub> 16      | B                  | 33   | 30   | 110   |                       | 138E / F20      |                 |
| DH-CIT-M316/B/F10v15     | CITIZEN CINCOM M <sub>3</sub> 16      | B                  | 33   | 30   | 127,5 | 15                    | 109E / F10      |                 |
| DH-CIT-M32/B/F20         | CITIZEN CINCOM M32                    | B                  | 53   | 49   | 147,5 |                       | F20             |                 |
| DH-CIT-M32/B/F37         | CITIZEN CINCOM M32                    | B                  | 53   | 49   | 147,5 |                       | 1536E / F37     |                 |
| DH-CIT-M32/B/F40         | CITIZEN CINCOM M32                    | B                  | 53   | 49   | 147,5 |                       | F40             |                 |
| DH-CIT-M332/A/F37        | CITIZEN CINCOM M <sub>3</sub> 32      | A                  | 54   | 48   | 152,5 |                       | 1536E / F37     |                 |
| DH-CIT-M332/A/F40        | CITIZEN CINCOM M <sub>3</sub> 32      | A                  | 54   | 48   | 152,5 |                       | F40             |                 |
| DH-CIT-M432/A/F20        | CITIZEN CINCOM M <sub>4</sub> 32      | A                  | 58,5 | 54   | 152,5 |                       | 138E / F20      |                 |
| DH-CIT-M432/A/F25        | CITIZEN CINCOM M <sub>4</sub> 32      | A                  | 58,5 | 54   | 152,5 |                       | 145E / F25      | DF25F 22-48     |
| DH-CIT-M432/A/F37        | CITIZEN CINCOM M <sub>4</sub> 32      | A                  | 58,5 | 54   | 152,5 |                       | 1536E / F37     |                 |
| DH-CIT-M432/A/F40        | CITIZEN CINCOM M <sub>4</sub> 32      | A                  | 58,5 | 54   | 152,5 |                       | F40             | DF40F 36-80     |

A = Hauptspindel - main spindle    B = Abgreifspindel - sub spindle

DH-FEIN-FA15//F22



DH-GILD-GLD25//F30

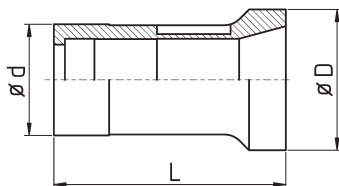


DH-GILD-GLD25//F30

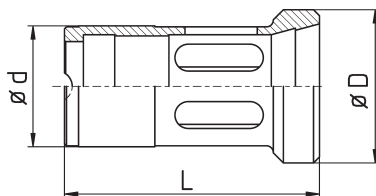
| Bestell-Nr.<br>order-no. | Maschine / Typ<br>machine / type | A / B -<br>Spindel | D     | d  | L     | verl.<br>ext.<br>[mm] | Zange<br>collet | Feder<br>spring |
|--------------------------|----------------------------------|--------------------|-------|----|-------|-----------------------|-----------------|-----------------|
| DH-CIT-M432/B/F20        | CITIZEN CINCOM M <sub>4</sub> 32 | B                  | 53    | 50 | 147,5 |                       | 138E / F20      |                 |
| DH-CIT-M432/B/F25        | CITIZEN CINCOM M <sub>4</sub> 32 | B                  | 53    | 50 | 147,5 |                       | 145E / F25      | DF25F 22-48     |
| DH-CIT-M432/B/F37        | CITIZEN CINCOM M <sub>4</sub> 32 | B                  | 53    | 50 | 147,5 |                       | 1536E / F37     |                 |
| DH-CIT-M432/B/F40        | CITIZEN CINCOM M <sub>4</sub> 32 | B                  | 53    | 50 | 147,5 |                       | F40             |                 |
| DH-CIT-ML12/A/F15        | CITIZEN CINCOM ML12              | A                  | 33    | 28 | 109   |                       | 120E / F15      |                 |
| DH-CIT-ML12/A/F16        | CITIZEN CINCOM ML12              | A                  | 33    | 28 | 109   |                       | 1212E / F16     |                 |
| DH-CIT-R07/B/F8          | CITIZEN CINCOM R07               | B                  | 21,7  | 21 | 81,3  |                       | 101E / F8       | DF07R 5.5-50    |
| DH-CIT-R07/B/F10         | CITIZEN CINCOM R07               | B                  | 23,7  | 21 | 80    |                       | 109E / F10      |                 |
| DH-CIT-R07/B/F13         | CITIZEN CINCOM R07               | B                  | 23,7  | 21 | 79,5  |                       | 116E / F13      |                 |
| DH-CIT-R07/B/F15         | CITIZEN CINCOM R07               | B                  | 23,7  | 21 | 79,5  |                       | 120E / F15      |                 |
| DH-CIT-R07/B/F16         | CITIZEN CINCOM R07               | B                  | 24,3  | 21 | 79,5  |                       | 1212E / F16     |                 |
| DH-ERGO-B60//F66         | ERGOMAT B60                      |                    | 88    | 74 | 138   |                       | 185E / F66      |                 |
| DH-ERGO-TBA42//F48       | ERGOMAT TBA42                    |                    | 74,3  | 56 | 113   |                       | 173E / F48      |                 |
| DH-FEIN-FA15//F22        | FEINLER FA15                     |                    | 37/32 | 27 | 61    |                       | 140E / F22      |                 |
| DH-GILD-GD16//F20        | GILDEMEISTER GD16                |                    | 30,6  | 26 | 76    |                       | 136E / F20      |                 |
| DH-GILD-GLD25//F30       | GILDEMEISTER GLD25               |                    | 47/40 | 34 | 78,5  |                       | 1446E / F30     |                 |
| DH-GILD-SPRINT20-5/A/F25 | GILDEMEISTER SPRINT 20-5         | A                  | 40,9  | 37 | 89,6  |                       | 145E / F25      |                 |
| DH-GILD-SPRINT20-5/A/F30 | GILDEMEISTER SPRINT 20-5         | A                  | 41    | 37 | 88    |                       | 1446E / F30     |                 |
| DH-GILD-SPRINT20-5/B/F25 | GILDEMEISTER SPRINT 20-5         | B                  | 40    | 37 | 89,6  |                       | 145E / F25      |                 |
| DH-GILD-SPRINT20-8/A/F25 | GILDEMEISTER SPRINT 20-8         | A                  | 40,6  | 37 | 85,5  |                       | 145E / F25      |                 |
| DH-GILD-SPRINT20-8/B/F25 | GILDEMEISTER SPRINT 20-8         | B                  | 40,7  | 37 | 84,5  |                       | 145E / F25      |                 |
| DH-GILD-SPRINT32//F37    | GILDEMEISTER SPRINT 32           |                    | 52,7  | 46 | 104,3 |                       | 1536E / F37     |                 |
| DH-GILD-SPRINT42/A/F48   | GILDEMEISTER SPRINT 42           | A                  | 65    | 57 | 110,5 |                       | 173E / F48      |                 |
| DH-GILD-SPRINT42/B/F48   | GILDEMEISTER SPRINT 42           | B                  | 65    | 57 | 110,5 |                       | 173E / F48      |                 |

A = Hauptspindel - main spindle    B = Abgreifspindel - sub spindle

DH-INDE-DG12//F22



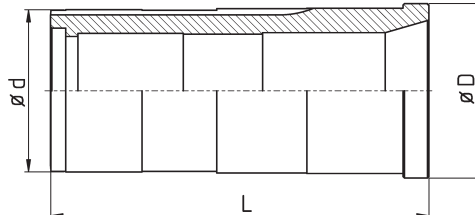
DH-INDE-MS25/B/144E



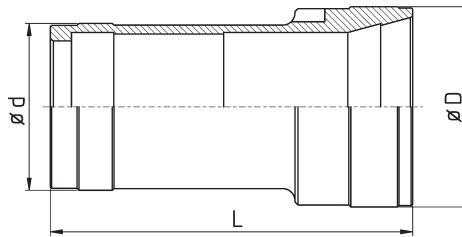
| Bestell-Nr.<br>order-no. | Maschine / Typ<br>machine / type      | A / B -<br>Spindel | D    | d  | L     | verl.<br>ext.<br>[mm] | Zange<br>collet | Feder<br>spring |
|--------------------------|---------------------------------------|--------------------|------|----|-------|-----------------------|-----------------|-----------------|
| DH-HAN-B12//F16          | HANWHA B12                            |                    | 24,5 | 23 | 89    |                       | 1212E / F16     |                 |
| DH-HAN-STL38H/A/F48      | HANWHA STL38H                         | A                  | 70   | 56 | 139,2 |                       | 173E / F48      |                 |
| DH-HAN-STL38H/B/F42      | HANWHA STL38H                         | B                  | 58,8 | 52 | 137,1 |                       | 173E / F48      |                 |
| DH-INDE-12//F22          | INDEX 12                              |                    | 38   | 28 | 68    |                       | 140E / F22      | DF22F 18.5-32   |
| DH-INDE-25//162E         | INDEX 25                              |                    | 52   | 42 | 82    |                       | 162E / F35      | DF35F 30-31     |
| DH-INDE-B30//F28         | INDEX B30; C29; E26; ER26;<br>INDEX24 |                    | 58   | 42 | 92    |                       | 148E / F28      | DF28F 23-22     |
| DH-INDE-B30//F35         | INDEX B30; C29; E26; ER26;<br>INDEX24 |                    | 58   | 42 | 92    |                       | 163E / F35      | DF35F 30-31     |
| DH-INDE-B42//F35         | INDEX B42; 36; E42; ER42              |                    | 70   | 56 | 104   |                       | 163E / F35      |                 |
| DH-INDE-B42//F48         | INDEX B42; 36; E42; ER42              |                    | 70   | 56 | 104   |                       | 173E / F48      | DF48F 42-32     |
| DH-INDE-B60//F48         | INDEX B60; ER60; E60                  |                    | 94   | 74 | 120   |                       | 173E / F48      | DF48F 43-38     |
| DH-INDE-B60//F66         | INDEX B60; ER60; E60                  |                    | 94   | 74 | 120   |                       | 185E / F66      |                 |
| DH-INDE-DG12//F22        | INDEX DG12                            |                    | 38   | 30 | 63,5  |                       | 140E / F22      |                 |
| DH-INDE-DG12//143E       | INDEX DG12                            |                    | 38   | 30 | 63,5  |                       | 143E / F25      | DF25F 22-25     |
| DH-INDE-GSC65//F66       | INDEX GSC65                           |                    | 94   | 80 | 163   |                       | 185E / F66      |                 |
| DH-INDE-MS25/B/144E      | INDEX MS25                            | B                  | 38   | 30 | 63,5  |                       | 144E / F25      |                 |

A = Hauptspindel - main spindle    B = Abgreifspindel - sub spindle

DH-TORN-SIGMA32/A/F37



DH-SPIN-PD42//F48

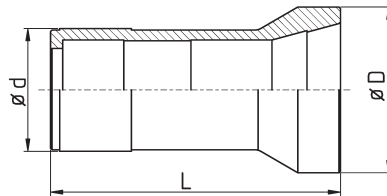


DH-SPIN-PD42//F48

| Bestell-Nr.<br>order-no. | Maschine / Typ<br>machine / type | A / B -<br>Spindel | D     | d    | L     | vert.<br>ext.<br>[mm] | Zange<br>collet | Feder<br>spring |
|--------------------------|----------------------------------|--------------------|-------|------|-------|-----------------------|-----------------|-----------------|
| DH-INDE-MS25/B/144E      | INDEX MS25                       | B                  | 38    | 30   | 64    |                       | 144E / F25      |                 |
| DH-INDE-MS25/B/9039E/SY  | INDEX MS25                       | B                  | 38    | 30   | 73    |                       | 9039E/SY        |                 |
| DH-INDE-ON12//136E       | INDEX ON12; OR12                 |                    | 32    | 30   | 64    |                       | 136E / F20      | DF20F 16-15     |
| DH-INDE-RN08//F17        | INDEX RN08                       |                    | 28    | 24   | 64    |                       | 125E / F17      |                 |
| DH-MAIE-ML26/A/F32       | MAIER ML26D                      | A                  | 48    | 46   | 101,2 |                       | 161E / F32      |                 |
| DH-MAIE-ML26/B/F32       | MAIER ML26D                      | B                  | 49    | 41   | 93,6  |                       | 161E / F32      |                 |
| DH-MIYA-BX26S/A/F32      | CITIZEN MIYANO BX26S             | A                  | 49    | 42,5 | 95    |                       | 161E / F32      |                 |
| DH-SAIC-B30//F32         | SAIC B30                         |                    | 55    | 42   | 96    |                       | 161E / F32      | DF32F 26-32     |
| DH-SCHE-PM1//F22         | SCHERER Feinbau PM1              |                    | 34    | 30   | 57    |                       | 140E / F22      |                 |
| DH-SPIN-BK//F35          | SPINNER BK-NC                    |                    | 53    | 45   | 116,5 |                       | 163E / F35      |                 |
| DH-SPIN-PD42//F48        | SPINNER PD42                     |                    | 66    | 55   | 120   |                       | 173E / F48      |                 |
| DH-SPIN-TC32//F35        | SPINNER TC32                     |                    | 53    | 45   | 128,4 |                       | 163E / F35      |                 |
| DH-SPIN-TC32//F38        | SPINNER TC32                     |                    | 53    | 45   | 128,4 |                       | 164E / F38      |                 |
| DH-STEI-STF16//F20       | STEINHÄUSER STF16                |                    | 35    | 28   | 78    |                       | 138E / F20      |                 |
| DH-STEI-STF36//F42       | STEINHÄUSER STF36                |                    | 62    | 50   | 110   |                       | 171E / F42      |                 |
| DH-STRO-M105//F15        | STROHM M105 - 125                |                    | 24    | 20   | 86    |                       | 120E / F15      |                 |
| DH-STRO-M125SJ//F15      | STROHM M125SJ AS                 |                    | 27/24 | 20   | 86    |                       | 120E / F15      |                 |
| DH-STRO-M205//F25        | STROHM M205                      |                    | 40    | 35   | 100   |                       | 145E / F25      |                 |
| DH-STRO-M4//F8           | STROHM M4-5; TORNOS M4           |                    | 15    | 12   | 66    |                       | 101E / F8       |                 |

A = Hauptspindel - main spindle    B = Abgreifspindel - sub spindle

DH-TRAU-TD26//F32



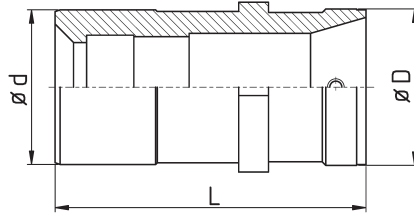
DH-TRAU-TD26//F32

| Bestell-Nr.<br>order-no.      | Maschine / Typ<br>machine / type | A / B -<br>Spindel | D     | d  | L     | verl.<br>ext.<br>[mm] | Zange<br>collet | Feder<br>spring |
|-------------------------------|----------------------------------|--------------------|-------|----|-------|-----------------------|-----------------|-----------------|
| DH-TORN-DECO2000-10//F13      | TORNOS Deco2000/10               |                    | 24/22 | 18 | 84,9  |                       | 116E / F13      |                 |
| DH-TORN-DECO2000-13/AB/F13v12 | TORNOS Deco2000/13               | A/B                | 30    | 30 | 102   |                       | 116E / F13      |                 |
| DH-TORN-DECO2000-13//136E     | TORNOS Deco2000/13               |                    | 30    | 30 | 91    |                       | 136E / F20      |                 |
| DH-TORN-DECO2000-20//F25      | TORNOS Deco2000/20               |                    | 42/40 | 38 | 105   |                       | 145E / F25      |                 |
| DH-TORN-DECO2000-20//F30      | TORNOS Deco2000/20               |                    | 44/40 | 38 | 110   |                       | 1446E / F30     |                 |
| DH-TORN-DECO2000-25//F37      | TORNOS Deco2000/25-26            |                    | 54    | 50 | 130   |                       | 1536E / F37     |                 |
| DH-TORN-ENC164//136E          | TORNOS ENC164                    |                    | 30    | 30 | 69    |                       | 136E / F20      |                 |
| DH-TORN-M20//F25              | TORNOS M20                       |                    | 40    | 33 | 109,7 |                       | 145E / F25      |                 |
| DH-TORN-MS7//F13              | TORNOS MS7                       |                    | 24/22 | 18 | 85    |                       | 116E / F13      |                 |
| DH-TORN-R10//F15              | TORNOS R10                       |                    | 26    | 22 | 90    |                       | 120E / F15      |                 |
| DH-TORN-SIGMA32/A/F37         | TORNOS Sigma32                   | A                  | 57/54 | 53 | 124   |                       | 1536E / F37     |                 |
| DH-TORN-SIGMA32/A/F42         | TORNOS Sigma32                   | A                  | 57/54 | 53 | 124   |                       | 171E / F42      |                 |
| DH-TORN-GAMMA/B/F13v12        | TORNOS Gamma                     | B                  | 38    | 28 | 105,2 |                       | 116E / F13      |                 |
|                               |                                  |                    |       |    |       |                       |                 |                 |
| DH-TRAU-A15//F22              | TRAUB A15                        |                    | 33    | 33 | 52    |                       | 140E / F22      |                 |
| DH-TRAU-A20//F22              | TRAUB A20                        |                    | 42    | 34 | 67    |                       | 140E / F22      |                 |
| DH-TRAU-A20//F28              | TRAUB A20                        |                    | 42    | 34 | 67    |                       | 148E / F28      | DF28F 23.5-8    |
| DH-TRAU-A25//F22              | TRAUB A25                        |                    | 52    | 37 | 96    |                       | 140E / F22      | DF22F 18.5-22   |
| DH-TRAU-A25//F32              | TRAUB A25                        |                    | 52    | 37 | 96    |                       | 161E / F32      | DF32F 26.5-37   |
| DH-TRAU-A26//F32              | TRAUB A26                        |                    | 52    | 40 | 96    |                       | 161E / F32      |                 |
| DH-TRAU-A42//F32              | TRAUB A42; TB42                  |                    | 75/68 | 54 | 114   |                       | 161E / F32      |                 |
| DH-TRAU-A60//F48              | TRAUB A60                        |                    | 93/86 | 74 | 114   |                       | 173E / F48      | DF48F 44-42     |
| DH-TRAU-A60//F66              | TRAUB A60                        |                    | 93/86 | 74 | 114   |                       | 185E / F66      |                 |
| DH-TRAU-TC15//F22             | TRAUB TC15                       |                    | 38    | 28 | 70    |                       | 140E / F22      | DF22F 18.5-32   |
| DH-TRAU-TD26//F32             | TRAUB TD26                       |                    | 54    | 40 | 95    |                       | 161E / F32      | DF32F 26.5-37   |

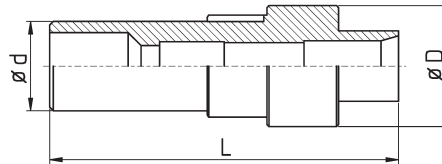
A = Hauptspindel - main spindle    B = Abgreifspindel - sub spindle



DH-TRAU-TNL26/B/157E



DH-TSUG-HS207/B/F15v15



DH-TRAU-TNL16//F20

| Bestell-Nr.<br>order-no. | Maschine / Typ<br>machine / type | A / B -<br>Spindel | D     | d       | L     | vert.<br>ext.<br>[mm] | Zange<br>collet | Feder<br>spring |
|--------------------------|----------------------------------|--------------------|-------|---------|-------|-----------------------|-----------------|-----------------|
| DH-TRAU-TNL12/A/F15      | TRAUB TNL12                      | A                  | 25    | 25      | 75    |                       | 120E / F15      |                 |
| DH-TRAU-TNL12/A/F16      | TRAUB TNL12                      | A                  | 25    | 25      | 75    |                       | 1212E / F16     |                 |
| DH-TRAU-TNL12/B/F15      | TRAUB TNL12                      | B                  | 25    | 21      | 88    |                       | 120E / F15      |                 |
| DH-TRAU-TNL12//144E      | TRAUB TNL12/16                   |                    | 35    | 30      | 88    |                       | 144E / F25      |                 |
| DH-TRAU-TNL127//136E     | TRAUB TNL12/7                    |                    | 26,9  | 25      | 76    |                       | 136E / F20      |                 |
| DH-TRAU-TNL12K//F16      | TRAUB TNL12K                     |                    | 30    | 30      | 75    |                       | 1212E / F16     |                 |
| DH-TRAU-TNL16//F20       | TRAUB TNL16                      |                    | 35    | 30      | 88    |                       | 138E / F20      |                 |
| DH-TRAU-TNL26/A/157E     | TRAUB TNL26                      | A                  | 54    | 46      | 122,2 |                       | 157E / F30      |                 |
| DH-TRAU-TNL26/B/157E     | TRAUB TNL26                      | B                  | 46,5  | 50,5/46 | 92,8  |                       | 157E / F30      |                 |
| DH-TRAU-TNS42//F48       | TRAUB TNS42                      |                    | 70    | 60      | 135   |                       | 173E / F48      |                 |
| DH-TRAU-TNA42//F48       | TRAUB TNA42                      |                    | 68    | 60      | 136   |                       | 173E / F48      |                 |
| DH-TSUG-BN20//F25        | TSUGAMI BN20                     |                    | 39,9  | 36      | 93,2  |                       | 145E / F25      |                 |
| DH-TSUG-BS32/A/F37       | TSUGAMI BS32                     | A                  | 47    | 45      | 129   |                       | 1536E / F37     |                 |
| DH-TSUG-HS207/B/F15v15   | TSUGAMI HS207                    | B                  | 38/32 | 28      | 111,1 | 15                    | 120E / F15      |                 |
| DH-TSUG-HS207/B/F25      | TSUGAMI HS207                    | B                  | 38/32 | 28      | 92    |                       | 145E / F25      |                 |

A = Hauptspindel - *main spindle*    B = Abgreifspindel - *sub spindle*

### Druckhülsen, STAR

### Collet Sleeves, STAR

#### Identische Druckhülsen unterschiedlicher Maschinentypen Identical collet sleeves for different machine types

| Spindel<br>spindle  | A                | B                 | Standardzange<br>standard collet | Spindel<br>spindle  | A  | B  | Standardzange<br>standard collet | Spindel<br>spindle  | A  | B  | Standardzange<br>standard collet |
|---------------------|------------------|-------------------|----------------------------------|---------------------|----|----|----------------------------------|---------------------|----|----|----------------------------------|
| Maschine<br>machine |                  |                   |                                  | Maschine<br>machine |    |    |                                  | Maschine<br>machine |    |    |                                  |
| SW7                 | 1                |                   | F15 /<br>120E                    | ECAS20              | 7  | 12 | F25 /<br>145E                    | ECAS32              | 13 | 15 | F37 /<br>1536E                   |
| SR10J               | 1                |                   |                                  | KNC20               | 10 |    |                                  | JNC32               | 14 | 15 |                                  |
| SB12RE              | 19               | 21                | F16 /<br>1212E                   | SB20                | 8  | 11 | KNC32                            | 14                  | 15 |    |                                  |
| SB12RG              | 19               | 21                |                                  | SB20RE              | 7  | 11 | SR32                             | 14                  | 15 |    |                                  |
| SB12RN              | 19               | 21                |                                  | SB20RN              | 9  | 11 | SR32J (alt)                      | 14                  | 15 |    |                                  |
| SW12RII             | 19               |                   |                                  | SB20RG              | 9  | 11 | SR32J (neu)                      | 13                  | 15 |    |                                  |
|                     |                  |                   |                                  | SR20                | 10 | 11 | SR32JII                          | 20                  | 22 |    |                                  |
| SA12                | 2                | 4                 | F20 /<br>138E                    | SR20J               | 8  | 11 | SR32JN                           | 13                  | 15 |    |                                  |
| SA16                | 2                | 4                 |                                  | SR20JII             | 9  | 12 | SV32                             | 13                  | 15 |    |                                  |
| SB12                | 2                | 4                 |                                  | SR20JN              |    | 11 | SV32J                            | 13                  | 15 |    |                                  |
| SB16                | 2                | 4                 |                                  | SR20R I / II / III  | 7  | 11 | VNC32                            | 14                  | 15 |    |                                  |
| ECAS12              | 3                | 5                 |                                  | SR20R IV            | 9  | 12 |                                  |                     |    |    |                                  |
| ECAS16              |                  | 5                 |                                  | SV20                | 8  | 11 | ST38                             |                     | 16 |    |                                  |
| SV12                | 3                | 4                 |                                  | SV20-R              | 9  | 12 | SV38R                            | 18                  | 16 |    |                                  |
| SW12R               |                  |                   |                                  | SW20                | 7  | 12 | SR38                             | 18                  | 16 |    |                                  |
| JNC16               | 2                |                   |                                  | ST20                | 7  | 12 |                                  |                     |    |    |                                  |
| KJR16               | 2                | 6                 |                                  | VNC20               | 10 |    |                                  |                     |    |    |                                  |
| RNC16 (neu)         | 2                |                   |                                  |                     |    |    |                                  |                     |    |    |                                  |
| SA16R               | 3                | 4                 |                                  |                     |    |    |                                  |                     |    |    |                                  |
| SR16                | 2                | 6                 |                                  |                     |    |    |                                  |                     |    |    |                                  |
| SR16R               | 7 <sup>red</sup> | 11 <sup>red</sup> |                                  |                     |    |    |                                  |                     |    |    |                                  |
| SST16               | 2                | 6                 |                                  |                     |    |    |                                  |                     |    |    |                                  |

**Hauptspindel (A)  
Gegenspindel (B)**

**main spindle (A)  
sub spindle (B)**

**Maschinen mit gleicher Nummer haben identische  
Druckhülsen.**

**Machines with identical number have identical  
collet sleeves.**

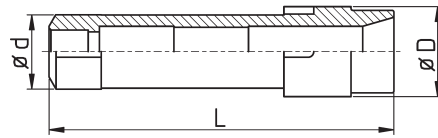
**Ist keine Nummer angegeben, gibt es keine weiteren  
kompatiblen Maschinen.**

**If there is no number written there is no further  
machine compatible.**

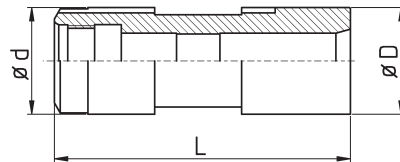
**Sind die Druckhülsen mehrerer Maschinen miteinander  
kompatibel, werden nur die Druckhülsen der grau  
unterlegten Maschinen in den Maßstabellen aufgeführt.**

**If collet sleeves of different machines are identical  
only the grey marked machine types will be found  
in the list on the next pages.**

DH-STAR-SR10J/B/F13v10



DH-STAR-SA12/B/F15

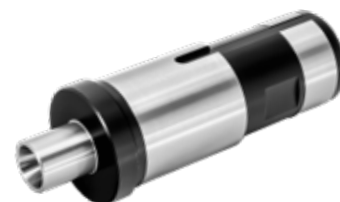
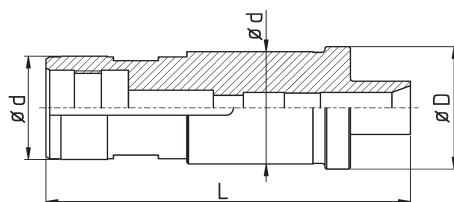


DH-STAR-SA12/B/F15

| Bestell-Nr.<br>order-no. | Maschine / Typ<br>machine / type | A / B -<br>Spindel | kleinster ID<br>smallest inner<br>diam. | D    | d    | L     | verl.<br>ext.<br>[mm] | Zange<br>collet | Feder<br>spring |
|--------------------------|----------------------------------|--------------------|---|------|------|-------|-----------------------|-----------------|-----------------|
| DH-STAR-SW7/B/F7v15      | STAR SW7                         | B                  | 5,0                                     | 27   | 21   | 109   | 15                    | 1010E / F7      |                 |
| DH-STAR-SW7/B/F10v17     | STAR SW7                         | B                  | 8,5                                     | 27   | 21   | 109   | 17                    | 109E / F10      |                 |
| DH-STAR-SW7/B/F15        | STAR SW7                         | B                  | 11,5                                    | 27   | 21   | 90    |                       | 120E / F15      |                 |
| DH-STAR-SR10J/A/F8       | STAR SR10J                       | A                  | 6,5                                     | 27   | 21   | 83    |                       | 101E / F8       |                 |
| DH-STAR-SR10J/A/F15      | STAR SR10J                       | A                  | 11,0                                    | 27   | 21   | 83    |                       | 120E / F15      | DF15F 11.5-28   |
| DH-STAR-SR10J/B/F8v10    | STAR SR10J                       | B                  | 6,5                                     | 24   | 20   | 92,5  | 10                    | 101E / F8       | DF07R 5.5-24    |
| DH-STAR-SR10J/B/F10v15   | STAR SR10J                       | B                  | 8,5                                     | 24   | 20   | 97,5  | 15                    | 109E / F10      |                 |
| DH-STAR-SR10J/B/F13      | STAR SR10J                       | B                  | 10,5                                    | 24   | 20   | 81    |                       | 116E / F13      |                 |
| DH-STAR-SR10J/B/F13v10   | STAR SR10J                       | B                  | 10,5                                    | 24   | 20   | 92,5  | 10                    | 116E / F13      | DF13R 10-36     |
| DH-STAR-SR10J/B/F13v15   | STAR SR10J                       | B                  | 10,5                                    | 24   | 20   | 97,5  | 15                    | 116E / F13      |                 |
| DH-STAR-SR10J/B/F15      | STAR SR10J                       | B                  | 11,5                                    | 24   | 20   | 81    |                       | 120E / F15      | DF15F 11.5-28   |
| DH-STAR-SA12/A/F20       | STAR SA12                        | A                  | 16,5                                    | 42   | 34   | 87    |                       | 138E / F20      | DF20F 16.5-30   |
| DH-STAR-SA12/A/F22       | STAR SA12                        | A                  |   | 42   | 34   | 87    |                       | 140E / F22      |                 |
| DH-STAR-SA12/A/144E      | STAR SA12                        | A                  |   | 42   | 34   | 87    |                       | 144E / F25      | DF25F 22-33     |
| DH-STAR-SA12/B/F10v15    | STAR SA12                        | B                  | 8,5                                     | 31,5 | 31,5 | 104,7 | 15                    | 109E / F10      |                 |
| DH-STAR-SA12/B/F15       | STAR SA12                        | B                  | 15,0                                    | 31,5 | 31,5 | 88,5  |                       | 120E / F15      |                 |
| DH-STAR-SA12/B/F20       | STAR SA12                        | B                  | 19,4                                    | 31,5 | 31,5 | 87,5  |                       | 138E / F20      | DF20F 17-25     |
| DH-STAR-SB12RG/A/F10     | STAR SB12R-G                     | A                  | 8,5                                     | 30   | 27   | 90    |                       | 109E / F10      |                 |
| DH-STAR-SB12RG/A/F15     | STAR SB12R-G                     | A                  | 13,2                                    | 30   | 27   | 90    |                       | 120E / F15      |                 |
| DH-STAR-SB12RG/A/F16     | STAR SB12R-G                     | A                  | 13,5                                    | 30   | 27   | 90    |                       | 1212E / F16     | DF15F 11.5-33   |
| DH-STAR-SB12RG/A/136E    | STAR SB12R-G                     | A                  | 16,5                                    | 30   | 27   | 90    |                       | 136E / F20      |                 |
| DH-STAR-SB12RG/B/F15     | STAR SB12R-G                     | B                  | 15,0                                    | 42   | 35   | 106   |                       | 120E / F15      |                 |
| DH-STAR-SB12RG/B/F16     | STAR SB12R-G                     | B                  | 15,8                                    | 42   | 35   | 106   |                       | 1212E / F16     |                 |
| DH-STAR-ECAS12/B/F20     | STAR ECAS12                      | B                  | 19,0                                    | 37,5 | 34   | 96    |                       | 138E / F20      |                 |

A = Hauptspindel - main spindle    B = Abgreifspindel - sub spindle

DH-STAR-ECAS20/B/F10v15

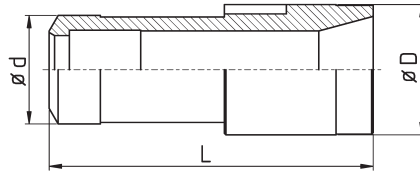


DH-STAR-ECAS20/B/F10v15

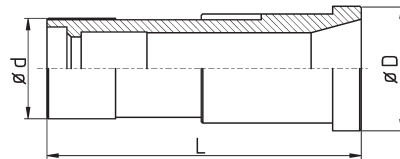
| Bestell-Nr.<br>order-no.  | Maschine / Typ<br>machine / type | A / B -<br>Spindel | kleiner ID<br>smaller inner<br>diam. | D    | d     | L     | verl.<br>ext.<br>[mm] | Zange<br>collet | Feder<br>spring |
|---------------------------|----------------------------------|--------------------|--------------------------------------|------|-------|-------|-----------------------|-----------------|-----------------|
| DH-STAR-SV12/A/F10v48     | STAR SV12                        | A                  | 10,0                                 | 38,5 | 34    | 144   | 48                    | 109E / F10      |                 |
| DH-STAR-SV12/A/F20        | STAR SV12                        | A                  | 16,8                                 | 39,5 | 34    | 93    |                       | 138E / F20      |                 |
| DH-STAR-SW12R/B/F10v10    | SW12R II                         | B                  | 8,5                                  | 29,5 | 27    | 101   | 10                    | 109E / F10      |                 |
| DH-STAR-SW12R/B/F10v15    | SW12R II                         | B                  | 8,3                                  | 29,5 | 27    | 106,5 | 15                    | 109E / F10      |                 |
| DH-STAR-SW12R/B/F13       | SW12R II                         | B                  | 13                                   | 29,5 | 27    | 90,5  |                       | 116E / F13      |                 |
| DH-STAR-SW12R/B/F15       | SW12R II                         | B                  | 15,0                                 | 29,5 | 27    | 90,5  |                       | 120E / F15      |                 |
| DH-STAR-SW12R/B/F16       | SW12R II                         | B                  | 16,0                                 | 29,5 | 27    | 90,5  |                       | 1212E / F16     |                 |
| DH-STAR-SW12R/B/136E      | SW12R II                         | B                  | 17,0                                 | 29,5 | 27    | 90,5  |                       | 136E / F20      |                 |
| DH-STAR-SR16/B/F20        | STAR SR16                        | B                  |                                      | 35   | 31    | 122   |                       | 138E / F20      |                 |
| DH-STAR-SR16R/B/F20       | STAR SR16R                       | B                  | 19,0                                 | 42   | 35    | 101   |                       | 138E / F20      |                 |
| DH-STAR-RNC16/B/F20       | STAR RNC16                       | B                  | 14,0                                 | 31   | 26    | 90    |                       | 138E / F20      |                 |
| DH-STAR-RNC16alt/B/F15v15 | STAR RNC16 alt                   | B                  | 14,0                                 | 25   | 24    | 105   |                       | 120E / F15      |                 |
| DH-STAR-ECAS20/B/F8v15    | STAR ECAS20                      | B                  | 6,5                                  | 41,5 | 38/35 | 122   | 15                    | 101E / F8       |                 |
| DH-STAR-ECAS20/B/F10v15   | STAR ECAS20                      | B                  | 8,5                                  | 41,5 | 38/35 | 121,5 | 15                    | 109E / F10      | DF10R 7-24      |
| DH-STAR-ECAS20/B/F13v15   | STAR ECAS20                      | B                  | 10,5                                 | 41,5 | 38/35 | 120,8 | 15                    | 116E / F13      |                 |
| DH-STAR-ECAS20/B/F15v15   | STAR ECAS20                      | B                  | 12,0                                 | 41,5 | 38/35 | 120,8 | 15                    | 120E / F15      | DF15F 11.5-33   |
| DH-STAR-ECAS20/B/F16v15   | STAR ECAS20                      | B                  | 13,0                                 | 41,5 | 38/35 | 120,8 | 15                    | 1212E / F16     | DF16F 12.5-34   |
| DH-STAR-ECAS20/B/136E     | STAR ECAS20                      | B                  | 20,5                                 | 41,5 | 38/35 | 104,5 |                       | 136E / F20      |                 |
| DH-STAR-ECAS20/B/F25      | STAR ECAS20                      | B                  | 24,0                                 | 41,5 | 38/35 | 101,5 |                       | 145E / F25      | DF25F 22-25     |
| DH-STAR-ECAS20/B/F27      | STAR ECAS20                      | B                  | 24,0                                 | 41,5 | 38/35 | 101,6 |                       | 147E / F27      | DF27F 23-28     |
| DH-STAR-ECAS20/B/F27L #   | STAR ECAS20                      | B                  | 24,0                                 | 41,5 | 38/35 | 104,5 |                       | 147E / F27      | DF27F 23-35     |
| DH-STAR-ECAS20HS/B/F20    | STAR ECAS20                      | B                  | 17                                   | 41,5 | 35    | 106,7 |                       | 138E / F20      |                 |
| DH-STAR-SR20/A/F10v15     | STAR SR20                        | A                  |                                      | 42   | 35    | 122   | 15                    | 109E / F10      |                 |
| DH-STAR-SR20/A/F25        | STAR SR20                        | A                  | 24,0                                 | 42   | 35    | 104,5 |                       | 145E / F25      | DF25F 22-44     |
| DH-STAR-SR20JN/A/F25      | STAR SR20JN                      | A                  | 21,0                                 | 42   | 35    | 101   |                       | 145E / F25      |                 |
| DH-STAR-SR20JN/A/F27      | STAR SR20JN                      | A                  | 23,5                                 | 42   | 35    | 103   |                       | 147E / F27      | DF27F 23-32     |

A = Hauptspindel - main spindle    B = Abgreifspindel - sub spindle  
 # verlängert auf normale Länge - extended to normal length

DH-STAR-SR20/A/F27



DH-STAR-SR20R/A/F25

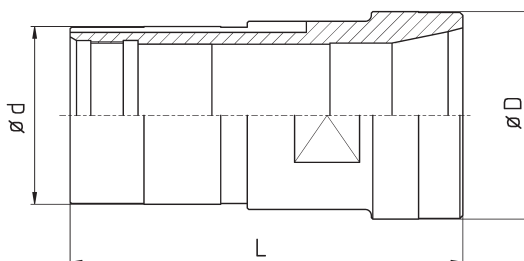


DH-STAR-SR20R/A/F25

| Bestell-Nr.<br>order-no. | Maschine / Typ<br>machine / type | A / B -<br>Spindel | kleiner ID<br>smalles inner<br>diam. | D    | d     | L     | verl.<br>ext.<br>[mm] | Zange<br>collet | Feder<br>spring |
|--------------------------|----------------------------------|--------------------|--------------------------------------|------|-------|-------|-----------------------|-----------------|-----------------|
| DH-STAR-SR20R/A/F15      | STAR SR20R I / II / III          | A                  | 13,0                                 | 43,4 | 38/34 | 114   |                       | 120E / F15      |                 |
| DH-STAR-SR20R/A/F20      | STAR SR20R I / II / III          | A                  | 17,5                                 | 43,4 | 38/34 | 110   |                       | 138E / F20      |                 |
| DH-STAR-SR20R/A/F25      | STAR SR20R I / II / III          | A                  | 22,0                                 | 43,4 | 38/34 | 110   |                       | 145E / F25      | DF25F 22-44     |
| DH-STAR-SR20R/A/F27      | STAR SR20R I / II / III          | A                  | 24,0                                 | 43,4 | 38/34 | 110   |                       | 147E / F27      | DF27F 23-35     |
| DH-STAR-SR20R/B/F8v15    | STAR SR20R I / II / III          | B                  | 6,5                                  | 42   | 35    | 121,5 | 15                    | 101E / F8       | DF07R 5.5-24    |
| DH-STAR-SR20R/B/F10v15   | STAR SR20R I / II / III          | B                  | 8,5                                  | 42   | 35    | 121,5 | 15                    | 109E / F10      | DF10R 7-24      |
| DH-STAR-SR20R/B/F15v10   | STAR SR20R I / II / III          | B                  | 12,0                                 | 42   | 35    | 104   | 10                    | 120E / F15      |                 |
| DH-STAR-SR20R/B/F15v15   | STAR SR20R I / II / III          | B                  | 12,0                                 | 42   | 35    | 120,3 | 15                    | 120E / F15      |                 |
| DH-STAR-SR20R/B/F16v10   | STAR SR20R I / II / III          | B                  | 13,0                                 | 42   | 35    | 115,3 | 10                    | 1212E / F16     |                 |
| DH-STAR-SR20R/B/F16v15   | STAR SR20R I / II / III          | B                  | 13,0                                 | 42   | 35    | 120,3 | 15                    | 1212E / F16     |                 |
| DH-STAR-SR20R/B/F20      | STAR SR20R I / II / III          | B                  | 20,0                                 | 42   | 35    | 104   |                       | 138E / F20      |                 |
| DH-STAR-SR20R/B/136E     | STAR SR20R I / II / III          | B                  | 17,0                                 | 42   | 35    | 106   |                       | 136E / F20      |                 |
| DH-STAR-SR20R/B/F25      | STAR SR20R I / II / III          | B                  | 23,0                                 | 42   | 35    | 101   |                       | 145E / F25      | DF25F 22-25     |
| DH-STAR-SR20R/B/F27      | STAR SR20R I / II / III          | B                  | 24,0                                 | 42   | 35    | 101   |                       | 147E / F27      | DF27F 23-28     |
| DH-STAR-SR20R/B/F27L #   | STAR SR20R I / II / III          | B                  | 24,0                                 | 42   | 35    | 103   |                       | 147E / F27      |                 |
| DH-STAR-SR20R4/A/F15v15  | STAR SR20R IV                    | A                  | 12,0                                 | 43,5 | 38/35 | 126,3 | 15                    | 120E / F15      | DF15F 11.5-28   |
| DH-STAR-SR20R4/A/F25     | STAR SR20R IV                    | A                  | 20,5                                 | 43,5 | 38/35 | 107   |                       | 145E / F25      | DF25F 22-44     |
| DH-STAR-SR20R4/A/F27     | STAR SR20R IV                    | A                  | 24,0                                 | 43,5 | 38/35 | 109   |                       | 147E / F27      | DF27F 23-35     |
| DH-STAR-SV20/A/F20       | STAR SV20                        | A                  | 17,5                                 | 42   | 35    | 104   |                       | 138E / F20      |                 |
| DH-STAR-SV20/A/F25       | STAR SV20                        | A                  | 22,0                                 | 42   | 35    | 104   |                       | 145E / F25      |                 |
| DH-STAR-SV20/A/F27       | STAR SV20                        | A                  | 24,5                                 | 42   | 35    | 104   |                       | 147E / F27      | DF27F 23-35     |
| DH-STAR-SR32/A/F37       | STAR SR32                        | A                  | 33,0                                 | 56   | 48    | 136   |                       | 1536E / F37     | DF37F 33-80     |
| DH-STAR-SR32JII/A/F37    | STAR SR32JII                     | A                  | 32,8                                 | 55   | 51    | 140   |                       | 1536E / F37     |                 |
| DH-STAR-SR32JII/A/F40    | STAR SR32JII                     | A                  | 36,5                                 | 55   | 51    | 140   |                       | F40             |                 |
| DH-STAR-SR32JII/B/F37    | STAR SR32JII                     | B                  | 36,5                                 | 55   | 51    | 125   |                       | 1536E / F37     |                 |
| DH-STAR-SR32JII/B/F40    | STAR SR32JII                     | B                  | 36,5                                 | 55   | 51    | 125   |                       | F40             |                 |

A = Hauptspindel - main spindle    B = Abgreifspindel - sub spindle  
 # verlängert auf normale Länge - extended to normal length

DH-STAR-ST38/B/F48



| Bestell-Nr.<br>order-no. | Maschine / Typ<br>machine / type | A / B -<br>Spindel | kleiner ID<br>smalles inner<br>diam. | D    | d       | L     | verl.<br>ext.<br>[mm] | Zange<br>collet | Feder<br>spring |
|--------------------------|----------------------------------|--------------------|--------------------------------------|------|---------|-------|-----------------------|-----------------|-----------------|
| DH-STAR-SV32/A/F25       | STAR SV32                        | A                  |                                      | 56   | 48      | 140   |                       | 145E / F25      |                 |
| DH-STAR-SV32/A/F30       | STAR SV32                        | A                  | 26,6                                 | 56   | 48      | 140   |                       | 1446E / F30     |                 |
| DH-STAR-SV32/A/F37       | STAR SV32                        | A                  | 33,0                                 | 56   | 48      | 135   |                       | 1536E / F37     |                 |
| DH-STAR-SV32/A/F40       | STAR SV32                        | A                  | 36,5                                 | 56   | 48      | 140   |                       | F40             | DF40F 36-60     |
| DH-STAR-SV32/B/F20v20    | STAR SV32                        | B                  | 17,0                                 | 55   | 51      | 148   | 20                    | 138E / F20      |                 |
| DH-STAR-SV32/B/F25       | STAR SV32                        | B                  | 22,0                                 | 55   | 51      | 125   |                       | 145E / F25      | DF25F 22-25     |
| DH-STAR-SV32/B/F30       | STAR SV32                        | B                  | 26,6                                 | 55   | 51      | 129   |                       | 1446E / F30     |                 |
| DH-STAR-SV32/B/F37       | STAR SV32                        | B                  | 37,0                                 | 55   | 51      | 125   |                       | 1536E / F37     | DF37F 34-44     |
| DH-STAR-SV32/B/F40       | STAR SV32                        | B                  | 37,0                                 | 55   | 51      | 125   |                       | F40             | DF40F 36.5-37   |
| DH-STAR-ST38/A/F37       | STAR ST38                        | A                  | 33,0                                 | 70   | 63,5/60 | 131,5 |                       | 1536E / F37     |                 |
| DH-STAR-ST38/A/F42       | STAR ST38                        | A                  | 36,0                                 | 70   | 63,5/60 | 133   |                       | 171E / F42      |                 |
| DH-STAR-ST38/A/F48       | STAR ST38                        | A                  | 43,0                                 | 70   | 63,5/60 | 133   |                       | 173E / F48      |                 |
| DH-STAR-ST38/B/F37       | STAR ST38                        | B                  | 37,0                                 | 70   | 63,5/60 | 131,5 |                       | 1536E / F37     |                 |
| DH-STAR-ST38/B/F25v20    | STAR ST38                        | B                  | 21,0                                 | 70   | 63,5/60 | 153   | 20                    | 145E / F25      | DF25F 22-44     |
| DH-STAR-ST38/B/F42       | STAR ST38                        | B                  | 42,0                                 | 70   | 63,5/60 | 133   |                       | 171E / F42      |                 |
| DH-STAR-ST38/B/F48       | STAR ST38                        | B                  | 48,0                                 | 70   | 63,5/60 | 133   |                       | 173E / F48      |                 |
| DH-STAR-SV38R/A/F37      | STAR SV38 R                      | A                  | 33,0                                 | 61   | 61,5    | 131,5 |                       | 1536E / F37     |                 |
| DH-STAR-SV38R/A/F48      | STAR SV38 R                      | A                  | 43,0                                 | 69,5 | 61,5    | 133   |                       | 173E / F48      |                 |

A = Hauptspindel - main spindle    B = Abgreifspindel - sub spindle  
 # verlängert auf normale Länge - extended to normal length