

ER - Doppelhalter

ER - Double Holders



passion for clamping

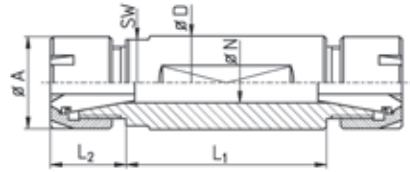
ER-Doppelhalter für CNC-Maschinen mit Abgreifspindel

ER-Double Holders for CNC-Lathes with Subspindle

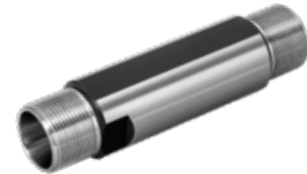
Ausführungen:

Versions:

FL: Spannfläche abgesetzt
FL: Enclosed clamping flat



WD: Spannfläche durchgehend
WD: Clamping flat throughout



Bestell-Nr. order-no.	Zange collet	D	L ₁	L ₂	A	N	SW	Mutter nut	Schlüssel spanner
ED085818WD	ER08	5/8"	18	9	12	5,5	14	ER08M	E08M
ED085829WD	ER08	5/8"	29	9	12	5,5	14	ER08M	E08M
ED085835WD	ER08	5/8"	35	10	12	5,5	14	ER08M	E08M
ED085840WD	ER08	5/8"	40	10	12	5,5	14	ER08M	E08M
ED085845WD	ER08	5/8"	45	10	12	5,5	14	ER08M	E08M
ED115832WD	ER11	5/8"	32	12	16	7,5	14	ER11M	E11M
ED111632WD	ER11	16	32	12	16	7,5	14	ER11M	E11M
ED111650WD	ER11	16	50	12	16	7,5	14	ER11M	E11M
ED111672WD	ER11	16	72	12	16	7,5	14	ER11M	E11M
ED1116100WD	ER11	16	100	12	16	7,5	14	ER11M	E11M
ED111932WD	ER11	3/4"	32	12	16	7,5	17	ER11M	E11M
ED111940WD	ER11	3/4"	40	12	16	7,5	17	ER11M	E11M
ED111952WD	ER11	3/4"	52	12	16	7,5	17	ER11M	E11M
ED111965WD	ER11	3/4"	65	12	16	7,5	17	ER11M	E11M
ED111972WD	ER11	3/4"	72	12	16	7,5	17	ER11M	E11M
ED111995WD	ER11	3/4"	95	12	16	7,5	17	ER11M	E11M
ED112032WD	ER11	20	32	10	16	7,5	--	ER11M	E11M
ED112040WD	ER11	20	40	10	16	7,5	17	ER11M	E11M
ED112050WD	ER11	20	50	10	16	7,5	17	ER11M	E11M
ED112065WD	ER11	20	65	12	16	7,5	17	ER11M	E11M
ED112080WD	ER11	20	80	12	16	7,5	17	ER11M	E11M
EDU112080WD	ER11	20	80	12	16	7,5	17	UM/ER11	GS17
ED112232WD	ER11	22	32	12	16	7,5	19	ER11M	E11M
EDU112295WD	ER11	22	95	12	16	7,5	19	UM/ER11	GS17
EDU1122100WD	ER11	22	100	12	16	7,5	19	UM/ER11	GS17
ED161928FL	ER16	3/4"	28	14	22	11	17	ER16M	E16M
ED161934FL	ER16	3/4"	34	14	22	11	17	ER16M	E16M
ED161937FL	ER16	3/4"	37	12	22	11	17	ER16M	E16M
ED161958FL	ER16	3/4"	58	13	22	11	17	ER16M	E16M
ED161967FL	ER16	3/4"	67	14	22	11	17	ER16M	E16M
ED161975FL	ER16	3/4"	75	13	22	11	17	ER16M	E16M
ED161995FL	ER16	3/4"	95	15	22	11	17	ER16M	E16M
ED1619100FL	ER16	3/4"	102	14	22	11	17	ER16M	E16M
ED162032WD	ER16	20	32	15	22	11	17	ER16M	E16M
ED162050WD	ER16	20	50	15	22	11	17	ER16M	E16M
ED162055FL	ER16	20	55	15	22	11	17	ER16M	E16M
ED162062FL	ER16	20	62	15	22	11	17	ER16M	E16M
ED162075FL	ER16	20	75	15	22	11	17	ER16M	E16M
ED162240WD	ER16	22	40	15	22	11	19	ER16M	E16M
ED162248WD	ER16	22	48	15	22	11	19	ER16M	E16M
ED162255WD	ER16	22	55	15	22	11	19	ER16M	E16M
ED162262WD	ER16	22	62	15	22	11	19	ER16M	E16M

Bestell-Nr. order-no.	Zange collet	D	L ₁	L ₂	A	N	SW	Mutter nut	Schlüssel spanner
ED162267WD	ER16	22	67	14	22	11	19	ER16M	E16M
ED162275WD	ER16	22	75	15	22	11	19	ER16M	E16M
ED162284WD	ER16	22	84	16	22	11	19	ER16M	E16M
ED162290WD	ER16	22	90	16	22	11	19	ER16M	E16M
ED162295WD	ER16	22	95	16	22	11	19	ER16M	E16M
ED1622100WD	ER16	22	100	16	22	11	19	ER16M	E16M
ED1622120WD	ER16	22	120	15	22	11	19	ER16M	E16M
ED162360WD	ER16	23	60	16	22	11	19	ER16M	E16M
ED162562WD	ER16	25	62	16	22	11	22	ER16M	E16M
ED162621WD	ER16	1"	21	14	22	11	--	ER16M	E16M
ED162635WD	ER16	1"	35	14	22	11	--	ER16M	E16M
ED162635FL	ER16	1"	35	15	22	11	22	ER16M	E16M
ED162645FL	ER16	1"	45	15	22	11	22	ER16M	E16M
ED162645WD	ER16	1"	45	15	22	11	22	ER16M	E16M
ED162662WD	ER16	1"	62	16	22	11	22	ER16M	E16M
ED162668WD	ER16	1"	68	14	22	11	22	ER16M	E16M
ED162675FL	ER16	1"	75	15	22	11	22	ER16M	E16M
ED162680WD**	ER16	1"	80	17	22	11	22	ER16M	E16M
ED202548WD	ER20	25	48	16	28	14	22	ER20M	E20M
ED202575WD	ER20	25	75	16	28	14	22	ER20M	E20M
ED2025100WD	ER20	25	100	15	28	14	22	ER20M	E20M
ED202645WD	ER20	1"	45	16	28	14	--	ER20M	E20M
ED202675WD	ER20	1"	75	15	28	14	22	ER20M	E20M
ED203220WD	ER20	32	20	18	28	14	-	ER20M	E20M
ED203235WD	ER20	32	35	18	28	14	-	ER20M	E20M
ED203243WD	ER20	32	43	18	28	14	27	ER20M	E20M
ED203243FL	ER20	32	43	18	28	14	27	ER20M	E20M
ED203248WD	ER20	32	48	18	28	14	27	ER20M	E20M
ED203255WD	ER20	32	55	18	28	14	27	ER20M	E20M
ED203285WD	ER20	32	85	18	28	14	27	ER20M	E20M
EDU162680WD*	ER16	1"	80	17	22	11	22	UM/ER16	GS25
EDU253252FL	ER25	32	52	16	42	17	-	UM/ER25	E25

* 1. Seite ER16 Standard / 2. Seite ER16 Mini
 ** mit Langlochbohrung im Schaft

* 1. thread ER16 standard / 2. thread ER16 mini
 ** with oval bore in the shank

ER-Doppelhalter können gegen Aufpreis auf AK1-Anschluss (G1/8") umgearbeitet werden
 ER-double holders can be changed to AK1-inner-coolant (G1/8") for extra charge



ER08M = M10 x 0,75



ER11M = M13 x 0,75



UM/ER11 = M14 x 0,75



ER16M = M19 x 1



UM/ER16 = M22 x 1,5



ER20M = M24 x 1



UM/ER25 = M32 x 1,5

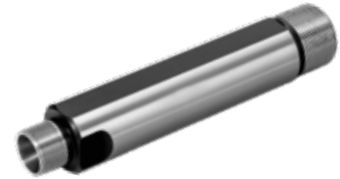
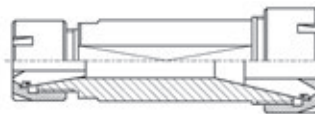
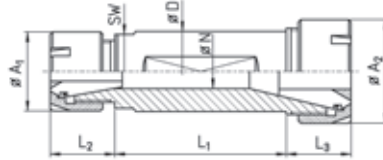
ER-Doppelhalter mit unterschiedlichen Zangengrößen

ER-Double Holders with Different Collet Sizes

Ausführungen:
Versions:

FL: Spannfläche abgesetzt
FL: Enclosed clamping flat

WD: Spannfläche durchgehend
WD: Clamping flat throughOut



Bestell-Nr. order-no.	Zangen collets	D	L ₁	L ₂	L ₃	A ₁	A ₂	N	SW	Mutter nut	Schlüssel spanner
ED11/161680FL	ER11/16	16	80	12	21	16	22	7,5	17	ER11M / ER16M	E11M / E16M
ED11/161933FL	ER11/16	3/4"	33	12	14	16	22	7,5	17	ER11M / ER16M	E11M / E16M
ED11/161955FL	ER11/16	3/4"	55	12	13	16	22	7,5	17	ER11M / ER16M	E11M / E16M
ED11/161965WD	ER11/16	3/4"	65	12	14	16	22	7,5	17	ER11M / ER16M	E11M / E16M
EDU11/161983FL	ER11/16	3/4"	83	12	12	16	22	7,5	17	UM/ER11 / ER16M	GS17 / E16M
ED11/161996FL	ER11/16	3/4"	96	12	14	16	22	7,5	17	ER11M / ER16M	E11M / E16M
ED11/162032WD	ER11/16	20	32	12	15	16	22	7,5	17	ER11M / ER16M	E11M / E16M
ED11/162050FL	ER11/16	20	50	11	15	16	22	7,5	17	ER11M / ER16M	E11M / E16M
ED11/162050WD	ER11/16	20	50	11	15	16	22	7,5	17	ER11M / ER16M	E11M / E16M
ED11/162055WD	ER11/16	20	55	12	15	16	22	7,5	17	ER11M / ER16M	E11M / E16M
EDU11/162082WD	ER11/16	20	82	11	12	16	22	7,5	-	UM/ER11 / UM/ER16	GS17 / GS25
EDU11/162290WD	ER11/16	22	90	12	16	19	22	7,5	19	UM/ER11 / ER16M	GS17 / E16M
EDU11/162292FL	ER11/16	22	92	12	16	19	22	7,5	19	UM/ER11 / ER16M	GS17 / E16M
EDU11/162292AK1WD	ER11/16	22	92	12	16	19	22	7,5	G1/8"	UM/ER11 / ER16M	GS17 / E16M
ED16/202265	ER16/20	22	65	23	25	22	28	11	19	ER16M / ER20M	E16M / E20M
ED16/202630WD	ER16/20	1"	30	16	16	22	28	11	-	ER16M / ER20M	E16M / E20M
ED16/202660FL	ER16/20	1"	60	15	15	22	28	11	22	ER16M / ER20M	E16M / E20M
ED16/252560WD	ER16/25	25	60	12	14	22	35	11	23	ER16M / ER25M	E16M / E25M
ED20/252562FL	ER20/25	25	62	22	22	28	35	14	27	ER20M / ER25M	E20M / E25M
ED20/252575WD	ER20/25	25	75	18	29	28	35	14	27	ER20M / ER25M	E20M / E25M
ED20/252662FL	ER20/25	1"	62	24	34	28	35	14	27	ER20M / ER25M	E20M / E25M
ED20/253250WD	ER20/25	32	50	25	25	28	35	14	27	ER20M / ER25M	E20M / E25M
ED20/253255WD	ER20/25	32	55	25	25	28	35	14	27	ER20M / ER25M	E20M / E25M



ER11M = M13 x 0,75



UM/ER11 = M14 x 0,75



ER16M = M19 x 1



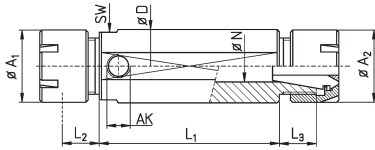
UM/ER16 = M22 x 1,5



ER20M = M24 x 1



ER25M = M30 x 1

**ER-Doppelhalter
mit innerer Kühlmittelzufuhr**
**ER-Double Holders
with Inner Coolant**


Bestell-Nr. order-no.	Zange collet	D	L ₁	L ₂	L ₃	A	N	AK	SW	Mutter nut	Schlüssel spanner
ED11/162280AK1WD	ER11/16	22	80	13	16	19/22	7,5	G1/8"	-	ER11M/ERC16M	E11M/E16M
ED11/162295AK1WD	ER11/16	22	91	13	16	19/22	7,5	G1/8"	-	ER11M/ERC16M	E11M/E16M
ED11/162295AK2WD	ER11/16	22	95	13	16	19/22	7,5	M8x1	-	ER11M/ERC16M	E11M/E16M
ED11/162295AK3WD	ER11/16	22	95	13	16	19/22	7,5	M10x1	-	ER11M/ERC16M	E11M/E16M
ED162254AK1WD	ER16	22	54	16	16	22	11	G1/8"	-	ERC16M	E16M
ED162257AK1WD	ER16	22	57	16	16	22	11	G1/8"	-	ERC16M	E16M
ED162265AK1WD	ER16	22	65	16	16	22	11	G1/8"	-	ERC16M	E16M
ED162267AK1WD	ER16	22	67	16	16	22	11	G1/8"	-	ERC16M	E16M
ED162270AK1WD	ER16	22	70	16	16	22	11	G1/8"	19	ERC16M	E16M
ED162270AK2WD	ER16	22	70	16	16	22	11	M8x1	19	ERC16M	E16M
ED162289AK1WD	ER16	22	89	16	16	22	11	G1/8"	-	ERC16M	E16M
ED162294AK1WD	ER16	22	94	15	15	22	11	G1/8"	-	ERC16M	E16M
ED1622100AK1WD	ER16	22	100	16	16	22	11	G1/8"	-	ERC16M	E16M
ED16/202260AK1WD	ER16/20	22	60	16	18	22/28	11	G1/8"	-	ERC16M/ERC20M	E16M/E20M
ED16/202265AK1WD	ER16/20	22	65	16	18	22/28	11	G1/8"	-	ERC16M/ERC20M	E16M/E20M
ED16/202270AK1WD	ER16/20	22	70	15	15	22/28	11	G1/8"	19	ERC16M/ERC20M	E16M/E20M
ED203244AK2WD	ER20	32	44	18	18	28	14	M8x1	-	ERC20M	E20M
ED203255AK1WD	ER20	32	55	18	18	28	14	G1/8"	27	ERC20M	E20M
ED203255AK2WD	ER20	32	55	18	18	28	14	M8x1	27	ERC20M	E20M
ED203265AK1WD	ER20	32	64	18	18	28	14	G1/8"	-	ERC20M	E20M
ED203285AK1WD	ER20	32	85	18	18	28	14	G1/8"	27	ERC20M	E20M

Alle Halter AK0 können auf AK1 - AK3 reduziert werden

All holders AK0 can be reduced to AK1 - AK3



ER11M = M13 x 0,75



ERC16M = M19 x 1



ERC20M = M24 x 1

für Dichtscheiben - for sealing disks