



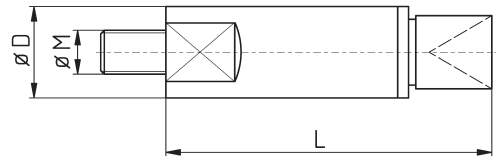
Unsere Spannhülsenlagerungen sind alle kugellagert --- dadurch maximal spielfrei mit super präziser Führung!

Our revolving ends for bar feeders are all mounted with ball bearings --- thereby maximum free of play and super precise guidance!

Drehende Enden für manuellen Stangenvorschub / Hydraulikrohre

Revolving Ends for Manual Bar Feeders

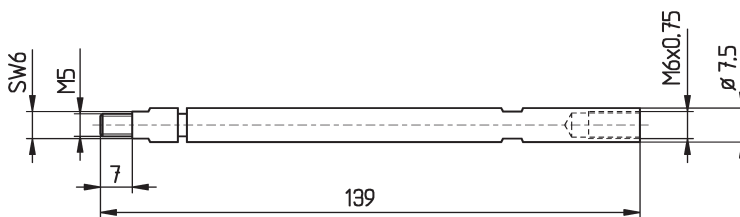
Bestell-Nr. order-no.	D	M	L
ESB0450	4,5	M3,5	35
ESB0550	5,5	M4	46
ESB0700	7	M5	52
ESB0750	7,5	M5	44
ESB0800	8	M5	48
ESB0850	8,5	M5	52
ESB0850L	8,5	M5	73
ESB1000	10	M6	49
ESB1100	11	M6	49
ESB1200	12	M6	49
ESB1400	14	M10	80
ESB1408	14	M8	80
ESB1500	15	M10	80
ESB1508	15	M8	80
ESB1600	16	M10	80
ESB1608	16	M8	80
ESB2000	20	M10	88
ESB2500	25	M12	108
ESB2800	28	M12	108
ESB3000	30	M12	108
ESB3200	32	M12	108
ESB3600	36	M12	108



Kopf der Lagerung nur beispielhaft
Head of the revolving end only exemplified

Spannhülsenlagerungen D7 für IEMCA

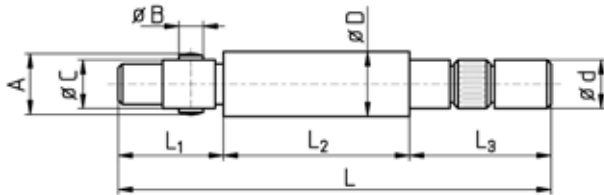
Revolving Ends D7 for IEMCA Bar Feeders



Bestell-Nr. order-no.
SPHLD07I

für FMB, IEMCA, BREUNING IRCO, TRAUB
Lademagazine

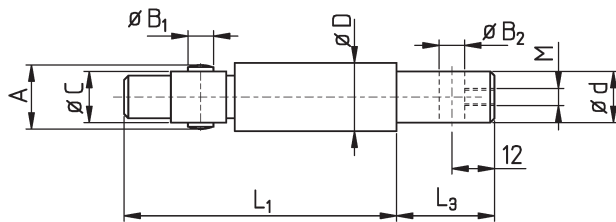
for FMB, IEMCA, BREUNING IRCO, TRAUB
Bar Feeders



Bestell-Nr. order-no.	d	D	A	B	C	L ₁	L ₂	L ₃	L
SPHLD10IR (special)	8	10,0	9,8	4	7	26,5	43,5	30	100
SPHLD105IR (special)	8	10,5	9,8	4	7	26,5	43,5	30	100
SPHLD10	8	10	9,8	4	7	26,5	43,5	30	100
SPHLD12	8	12	11,8	4	8	26,5	43,5	30	100
SPHLD13	8	13	11,8	4	8	26,5	43,5	30	100
SPHLD15	12	15	14,8	6	11	26,5	43,5	30	100
SPHLD16	12	16	15,8	6	11	26,5	43,5	30	100
SPHLD18	12	18	17,8	6	11	26,5	43,5	30	100
SPHLD20	17	20	19,8	8	14	40,5	45,5	30	116
SPHLD22	17	22	21,8	8	14	40,5	45,5	30	116
SPHLD23	17	23	21,8	8	14	40,5	45,5	30	116
SPHLD25	20	25	24,8	8	20	43	46	30	119
SPHLD28	20	28	24,8	8	20	43	46	30	119
SPHLD30	20	30	29,8	8	20	43	46	30	119
SPHLD32	20	32	31,8	8	20	43	46	30	119
SPHLD36	20	36	35,8	8	20	43	46	30	119
SPHLD42	20	42	41,8	8	20	43	46	30	119
SPHLD52	20	52	51,8	8	20	43	46	30	119

Spannhülsenlagerungen
für LNS Mini-Sprint S2

Revolving Ends
for LNS Mini-Sprint S2



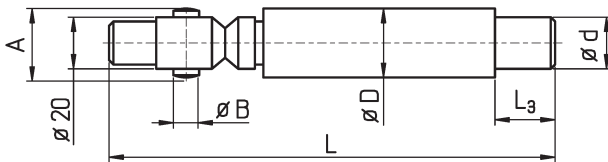
Bestell-Nr. order-no.	d	D	A	B ₁ / B ₂	C	L ₁	L ₃	M
SPHL10LNS	8	10	10	4	7	67	30	M4
SPHL12LNS	8	12	12	4	8	69	30	--
SPHL15LNS	12	15	15	6	11	67	30	M5
SPHL18LNS	12	18	18	6	11	70	30	M5
SPHL20LNS	17	20	20	8	14	81	30	M8
SPHL25LNS	20	25	25	8	20	85,5	30	M8
SPHL36LNS	30	36	36	8 / --	20	158	40	--
SPHL50LNS	42	50	--	--	20	158	50	--

"TURBO"

für FMB, LNS, BREUNING IRCO Lademagazine

"TURBO"

for FMB, LNS, BREUNING IRCO Bar Feeders



Bestell-Nr. order-no.	d	D	A	B	L ₃	L
SPHLTD25 *	20	25	24,8	8	40	197
SPHLTD28 *	25	28	25,8	8	40	197
SPHLTD30 *	25	30	25,8	8	40	197
SPHLTD32 *	25	32	31	8	40	197
SPHLTD34 *	30	34	31	8	40	197
SPHLTD36 *	30	36	35	8	40	207
SPHLTD38	30	38	-	-	40	207
SPHLTD40	33	40	-	-	50	207
SPHLTD42	33	42	-	-	50	207
SPHLTD45	33	45	-	-	50	207
SPHLTD50	42	50	-	-	50	207
SPHLTD60	51	60	-	-	75	232
SPHLTD63	51	63	-	-	75	232
SPHLTD65	51	65	-	-	75	232
SPHLTD70**	51	70	-	-	-	-
SPHLTD80**	51	80	-	-	-	-

* Verwendbar für Spannhülsen "Turbo" und mit Querstift
**Auf Anfrage

* Useable for bar feeder collets "Turbo" and pinned type
** On request

"TURBO"

für TORNOS Lademagazine

"TURBO"

for TORNOS Bar Feeders

Bestell-Nr. order-no.	d	D	A	B	L ₃	L
SPHLTR32	22	32	31	8	30	192
SPHLTR36	25	36	35	8	30	192

für TORNOS, ROBOBAR
Lademagazine

for TORNOS, ROBOBAR
Bar Feeders

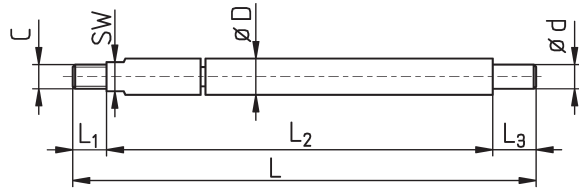


Bild 1

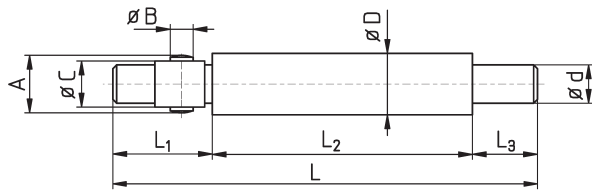


Bild 2



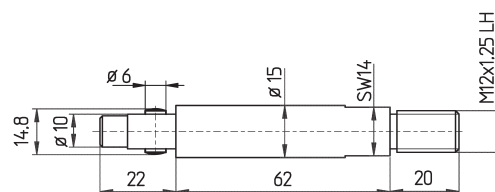
Bestell-Nr. order-no.	d	D	A	B	C	L ₁	L ₂	L ₃	L	Bild picture
SPHLD05R	M3	5,5	-	-	M4	7	78	8	93	1
SPHLD07R	5	7,5	-	-	M5	7	78	16	101	1
SPHLD10R	7	10,5	9,8	4	7	27	73	16	116	2
SPHLD12R	8	12	11,8	4	8	28	72	16	115	2
SPHLD16R	10	16	15,5	6	11	26	116	16	158	2
SPHLD18R	10	18	17,8	6	11	28	116	16	159	2
SPHLD21R	14	20,5	19,8	8	14	40	110	20	169	2
SPHLD25R	20	25	24,8	8	20	42	117	22	181	2
SPHLD26R	20	26	24,8	8	20	43	114	22	179	2

für CAV Lademagazine

for CAV Bar Feeders

Bestell-Nr.
order-no.

SPHL15CAV

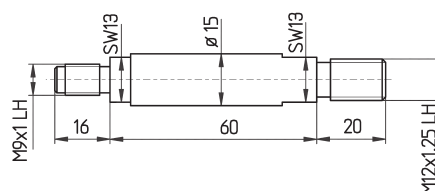


für FEDEK Lademagazine / LNS ASIA

for FEDEK Bar Feeders / LNS ASIA

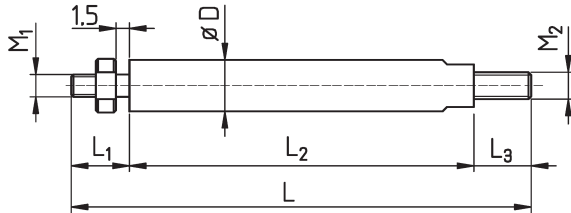
Bestell-Nr.
order-no.

SPHL15FED



für **BECHLER, TORNOS**
Lademagazine

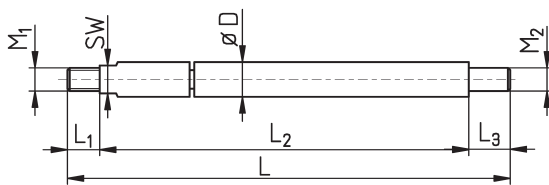
for **BECHLER, TORNOS**
Bar Feeders



Bestell-Nr. order-no.	D	M ₁	M ₂	L ₁	L ₂	L ₃	L	Magazin magazine
SPHLD10B1	10	M5	M6	14	68	14	96	BECHLER
SPHLD10B2	10	M5	M6	15	56	14	85	BECHLER
ERB0760	7	M4	M5	11,5	39,5	9	60	BECHLER
ERT0450	4,5	M3	M3 Innengew.	9	54	8 Innengew.	62	TORNOS
ERT0550	5,5	M3	M3 Innengew.	8	55	8 Innengew.	63	TORNOS
ERT0700	7	M4	M5	11,5	41,5	10	63	TORNOS
ERT0750	7,5	M4	M5	11	42	10	63	TORNOS
ERT0850	8,5	M5	M5	12	41,5	10	63,5	TORNOS
ERT1050	10,5	M6	M6	14	45	11	70	TORNOS

für **GAUTHIER, IEMCA, LNS**
Lademagazine

for **GAUTHIER, IEMCA, LNS**
Bar Feeders



Bestell-Nr. order-no.	D	M ₁	M ₂	SW	L ₁	L ₂	L ₃	L	Magazin magazine
SPHLD05GS	5,0	M4	M4	4	7	72,5	10,5	91	GAUTHIER / IEMCA
SPHLD05G	5,5	M4	M4	4	7	73,5	10	91*	GAUTHIER / IEMCA
SPHLD07GS	7,0	M5	M5	6	7	79	11	97	GAUTHIER
SPHLD07G	7,5	M5	M5	6	7	79	11	97*	GAUTHIER
SPHLD07SLNS	7,0	M4	M5	6	8	118	11	131	LNS Mini Sprint
SPHLD07LNS	7,5	M4	M5	6	8	115	8	131*	LNS Mini Sprint
SPHLD12LNS	12	M6	M6	9				72	LNS Mini Sprint

* Standardausführung für Kanal D5 bzw. D7

* Standard version for channel D5 resp. D7

für TRAUB, FMB
Lademagazine

for TRAUB, FMB
Bar Feeders

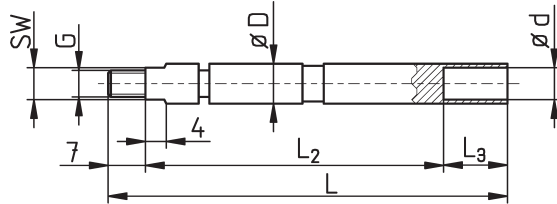


Bild 1

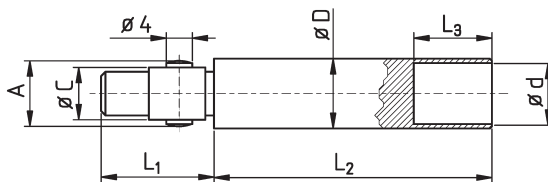


Bild 2

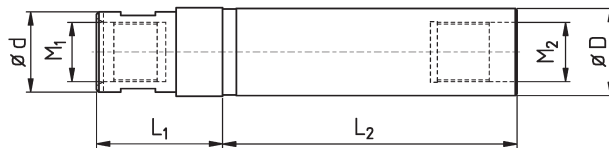


Bestell-Nr. order-no.	D	Bild picture	G	d	SW	L ₂	L ₃	L	Magazin magazine
SPHLD05T	5,5	1	M4	4,5	4	56	12	75	TRAUB / FMB
SPHLD07T	7,5	1	M5	6,5	6	63	15	85	TRAUB / FMB

Bestell-Nr. order-no.	D	Bild picture	A	C	d	L ₁	L ₂	L ₃	Magazin magazine
SPHLD10T	10	2	9,9	7	9	24	61	18	TRAUB
SPHLD12T	12	2	11,9	8	11	24	61,5	18	TRAUB

für IEMCA Lademagazine

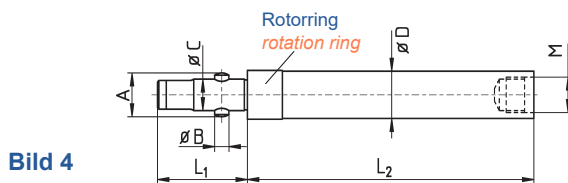
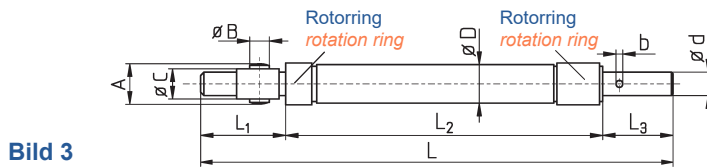
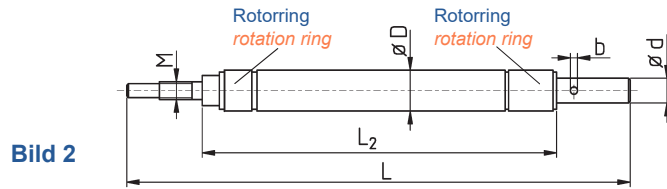
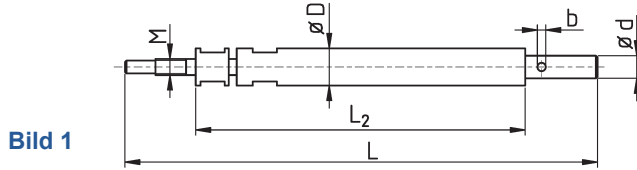
for IEMCA Bar Feeders



Bestell-Nr. order-no.	D	d	L ₁	L ₂	M ₁	M ₂
SPHLDI25	25	23	40	81	M17x1	M17x1
SPHLDI30	30	30	49	91	M25x1,5	M20x1
SPHLDI40	40	45	51	114	M25x1,5	Ø 30

für IEMCA, EDGE, BOSS
Lademagazine

for IEMCA, EDGE, BOSS
Bar Feeders



Bestell-Nr. order-no.	D	Bild picture	d	L ₂	L	M	b	
SPHL12	12	1	8	109	172	M7x0,75	3	
SPHL15	15	2	12	132,5	195	M8x1	4	
SPHL16	16	2	12	132,5	195	M8x1	4	Für Spannhülsen DI original IEMCA
SPHL18	18	2	12	132,5	195	M8x1	4	
SPHL19	19	2	12	132,5	195	M8x1	4	
SPHL20	20	2	14	132,5	210	M10x1	-	For bar feed collets original IEMCA
SPHL23	23	2	14	132,5	210	M10x1	4	
SPHL25	25	2	14	132,5	210	M10x1	4	
SPHL27	27	2	14	132,5	210	M10x1	4	

Bestell-Nr. order-no.	D	Bild picture	d	M	L ₁	L ₂	L ₃	L	A	B	C	b	
SPHL12IE	12	3	8	--	27	113	30	12	4	8	3		
SPHL15IE	15	3	12	--	26	127	35	15	6	11	4		
SPHL16IE	16	3	12	--	26	127	35	16	6	11	4		Für Spannhülsen mit Querloch
SPHL18IE	18	3	12	--	26	127	35	18	6	11	4		
SPHL20IE	20	3	14	--	40	125	35	20	8	14	-		For bar feed collets pinned type
SPHL23IE	23	3	14	--	37	125	33	20	8	14	-		
SPHL12IE-S *	12	4	--	M9 x 1L	26	83	--	12	4	8	--		
SPHL15IE-S *	15	4	--	M12 x 1L	28	98	--	15	6	11	--		
SPHL18IE-S *	18	4	--	M15 x 1L	28	98	--	18	6	11	--		
SPHL23IE-S *	23	4	--	M18 x 1L	40	92,5	--	23	8	14	--		

* für IEMCA SIR Mehrspindler

* for IEMCA SIR multispindle bar feeder

für IEMCA, CUCCHI
Lademagazine

for IEMCA, CUCCHI
Bar Feeders

IEMCA					
Bestell-Nr. order-no.	D	L	F	d	Bild picture
V516.007	7,5	126	M6x0,75	M5x0,5	1
V516.010	10	113	M8x1	M6x0,75	1
V516.012	12	116	M10x1	M7x0,75	1
V516.015	15	121	M12x1,5	M8x1	1
V516.020	20	133	M14x1,5	M10x1	1
V516.025	25	133	M14x1,5	M10x1	1
V516.030	30	135	M14x1,5	M10x1	1

CUCCHI					
Bestell-Nr. order-no.	D	L	F	d	Bild picture
V517.010	10	107	M7x1	M6x0,75	2
V517.012	12	107	M8x1,25	M7x0,75	2
V517.014	14	107	M10x1,5	M8x1	2
V517.016	16	107	M10x1,5	M8x1	2
V517.019	19	118	M12x1,75	M10x1	2
V517.040	40	61	M28x1,5	M25x1,5	3

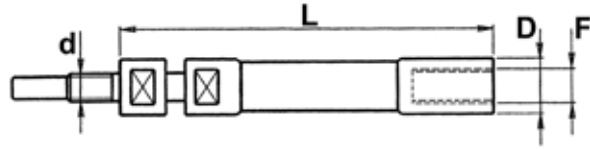


Bild 1

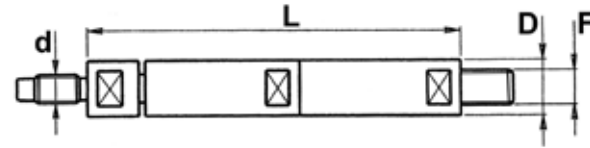


Bild 2

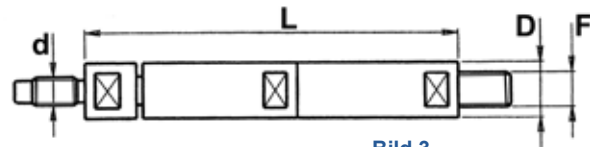


Bild 3

Drehende Enden

Revolving Ends

Bestell-Nr. order-no.	D	d	L	Fahnenstange pushrod
V516.107	14,5	12	23	V516.101/102
V516.109	24	20	38	V516.105/106/201/202

